

## LIST OF FIGURES (MAPS)

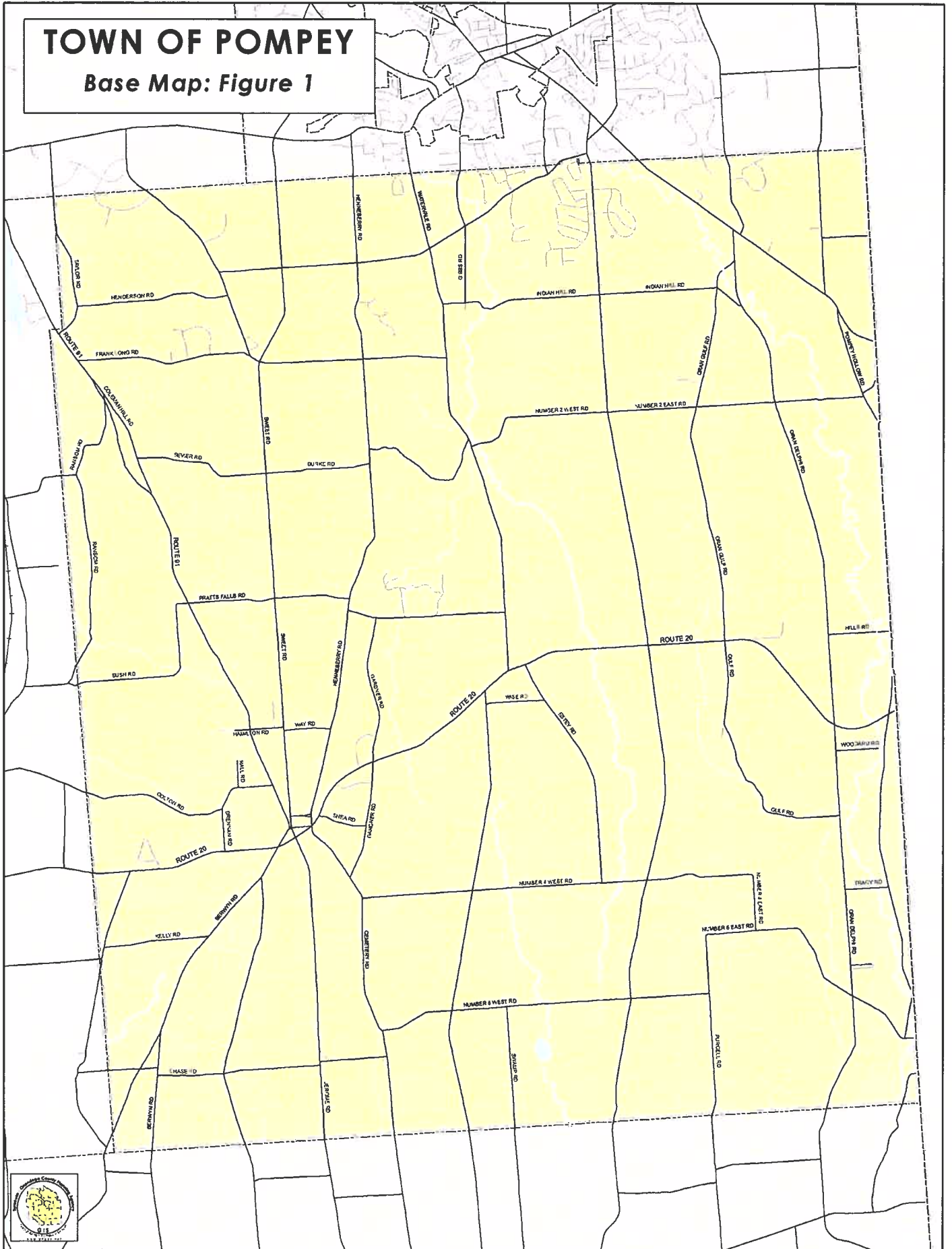
### Figure

1. The Town of Pompey - Base Map
2. The Geographic Location of the Town of Pompey within Onondaga County.
3. Town of Pompey - Bedrock Geology.
4. NYS - Radon Hazard.
5. Town of Pompey - Radon Hazard
6. Town of Pompey - Land Cover
7. Town of Pompey - Prime and Statewide Important Soils.
8. Town of Pompey - Septic System Suitability of Soils
9. Town of Pompey - FEMA Floodplains and NYSDEC Wetlands.
10. Town of Pompey - Unconsolidated Aquifers.
11. Town of Pompey - Scenic Corridors and View sheds.
12. Onondaga Nation Archeological Sites
13. Town of Pompey Cemeteries
14. Town of Pompey - Fire Districts
15. Town of Pompey - Highway System
16. Town of Pompey - School Districts
17. Town of Pompey - Land Use
18. Town of Pompey - Agricultural Districts

19. Hamlet of Delphi Falls - Land Use
20. Hamlet of Oran - Land Use.
21. Hamlet of Pompey Center - Land Use.
22. Hamlet of Pompey Hill - Land Use.
23. Hamlet of Watervale - Land Use.
24. Town of Pompey - Housing Built Since 1990
25. Town of Pompey Housing Development  
Limitations of Soils.
26. Town of Pompey - Topography
27. Town of Pompey - Steep Slopes (>15%)
28. Town of Pompey - Topographic Map - 900 foot elevation noted
29. Town of Pompey - Natural Gas Pipeline
30. Town of Pompey - Zoning

# TOWN OF POMPEY

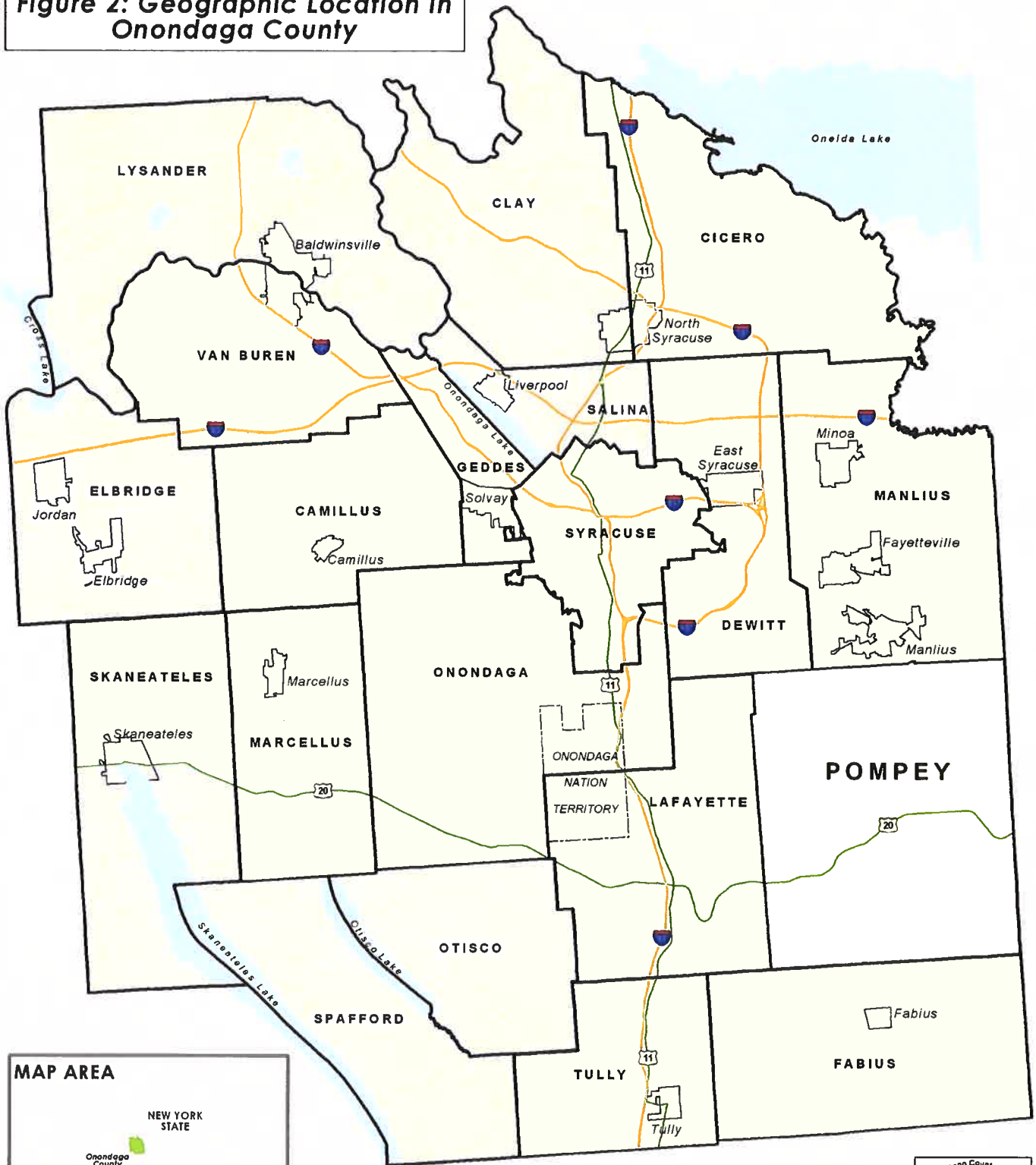
## Base Map: Figure 1



# TOWN OF POMPEY



Figure 2: Geographic Location in Onondaga County



## MAP AREA

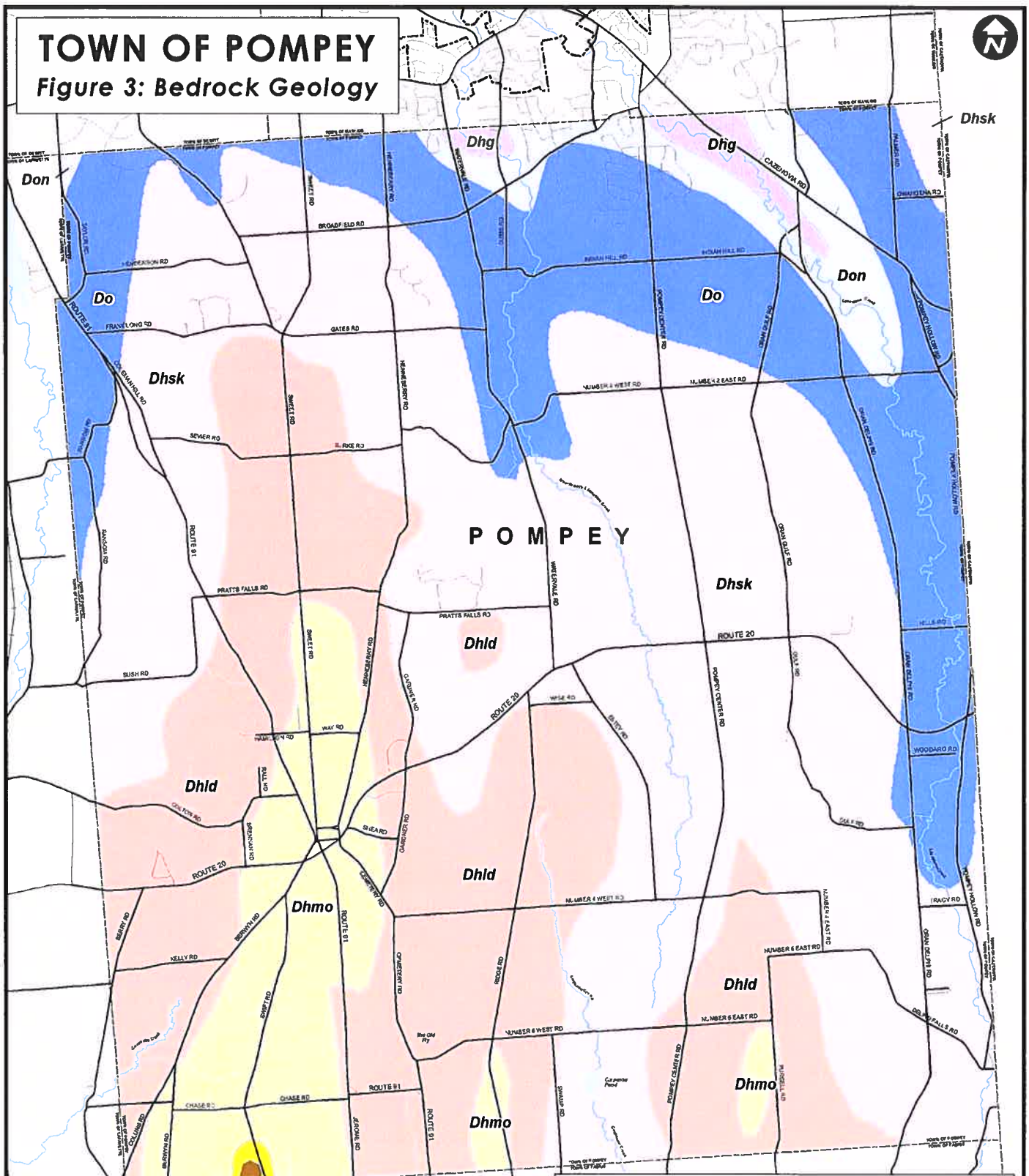


Main Map Only



# TOWN OF POMPEY

## Figure 3: Bedrock Geology



### Source Disclaimer:

While every effort has been made to insure the integrity of this digital data, the New York State Education Department (NYSED) makes no representation or warranty, expressed or implied, with respect to its accuracy, completeness, or usefulness for any particular purpose or social. NYSED assumes no liability for damages resulting from the use of any information, apparatus, method or process disclosed in this dataset, map or text, and urges independent site-specific verification of the information contained herein. Any use of trade, product, or firm names is for descriptive purposes only and does not imply endorsement by NYSED.

### LEGEND

- Genesee Group and Tully Limestone**
- Tully Limestone, D1
- West River Shale, Dg
- Hamilton Group**
- Ludlowville Formation, Dhd
- Moscow Formation, Dhmo
- Skaneateles Formation, Dhsk

- Onondaga Limestone and Tristates Group**
- Onondaga Limestone, Don
- Oriskany Sandstone, Do
- Heiderberg Group**
- Port Ewen Formation, Dhg

Source: The New York State Geologic Survey



New York State  
Indoor Radon by County

Basement, Short-term Estimates  
Percent of Homes Greater than 4pCi/L

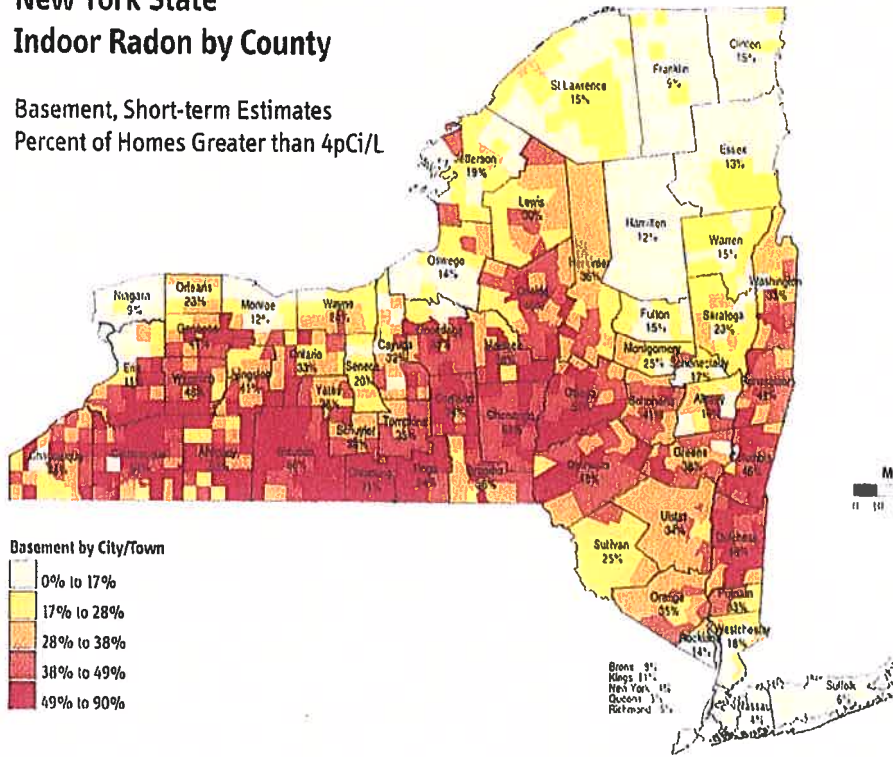


Fig. 4a. NEW YORK STATE RADON HAZARD MAP-BASEMENTS

New York State  
Indoor Radon by County

Living Area, Long-term Estimates  
Percent of Homes Greater than 4pCi/L

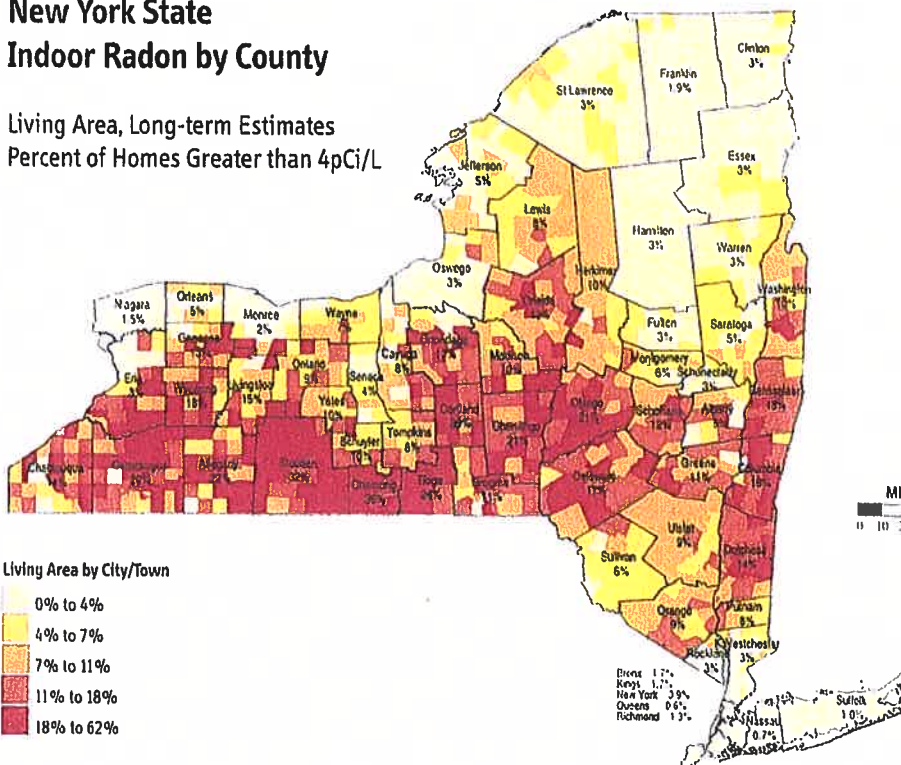
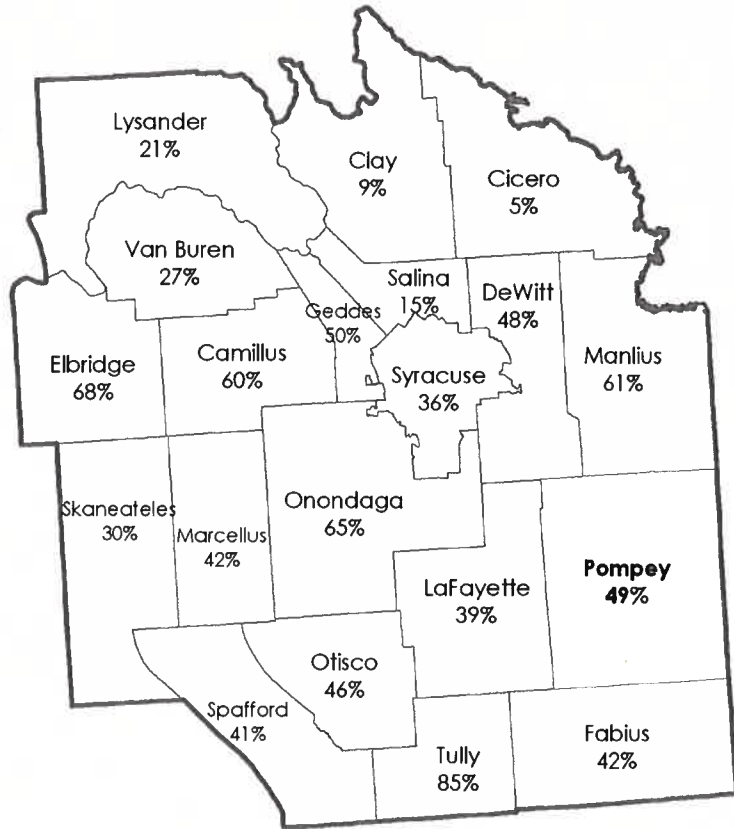


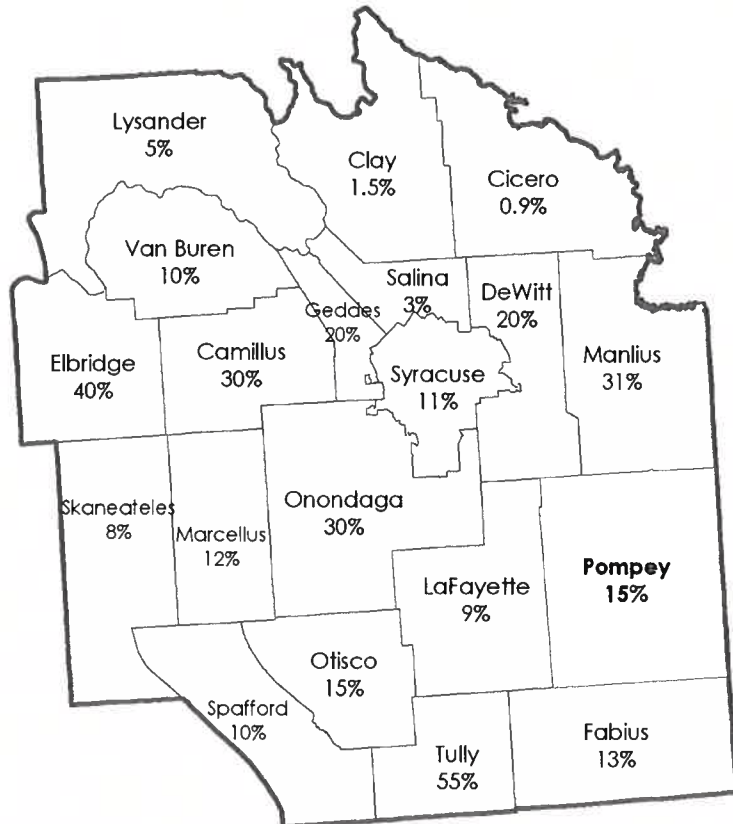
Fig. 4b. NEW YORK STATE RADON HAZARD MAP-LIVING SPACE

**TOWN OF POMPEY**  
*Figure 5: Radon Hazard*

Map A: Basement

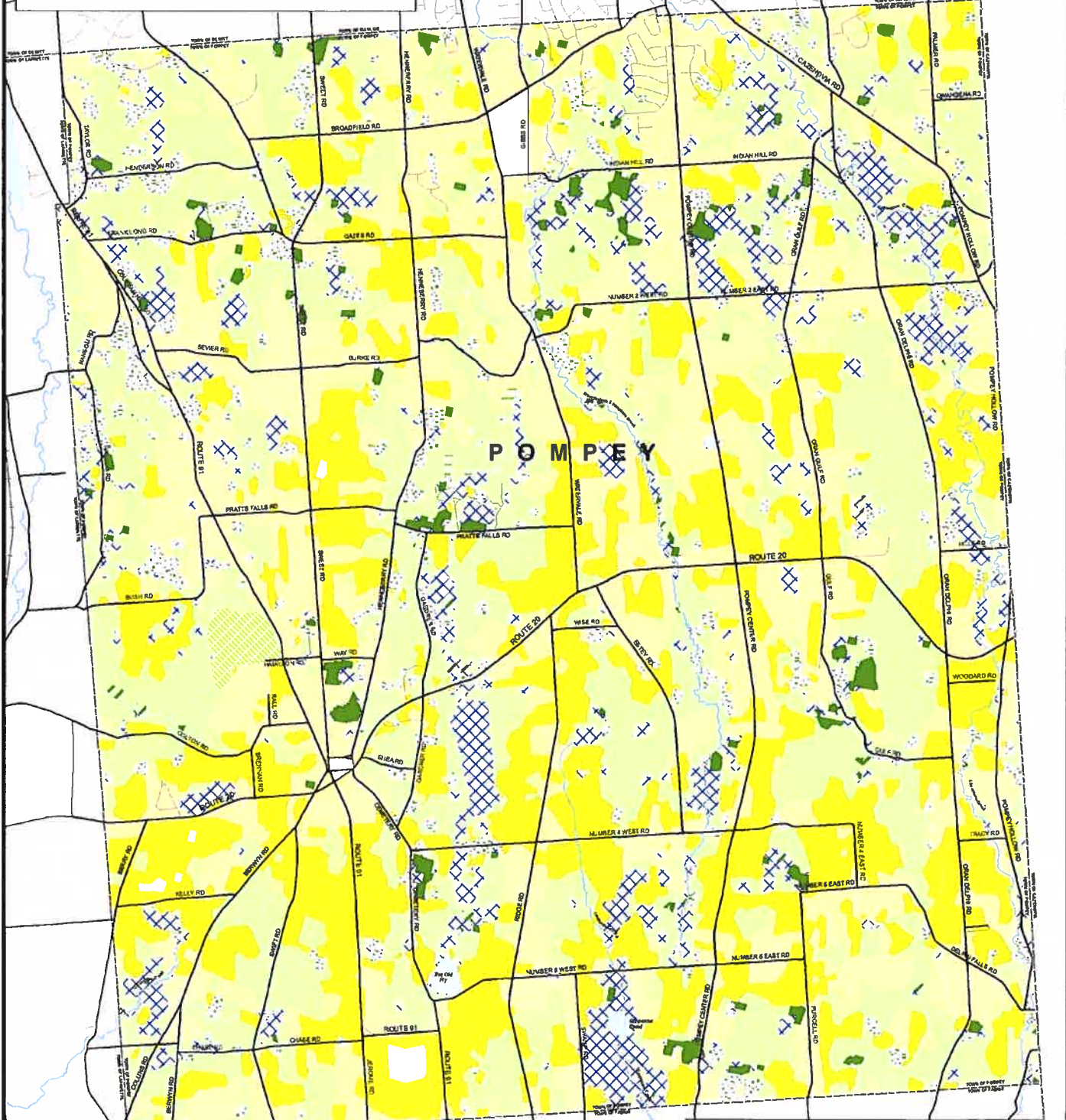


Map B: Living Area



# TOWN OF POMPEY

## Figure 6: Land Cover



### Data Abstract:

This data is the 2005 era classification of the U.S. East Coast, Zone 60. This data set consists of about 25 full or partial Landsat 5 Thematic Mapper scenes which were analyzed according to the Coastal Change Analysis Program (C-CAP) protocol to determine land cover. Some data generalization processes were performed by the Syracuse-Onondaga County Planning Agency.

### LEGEND

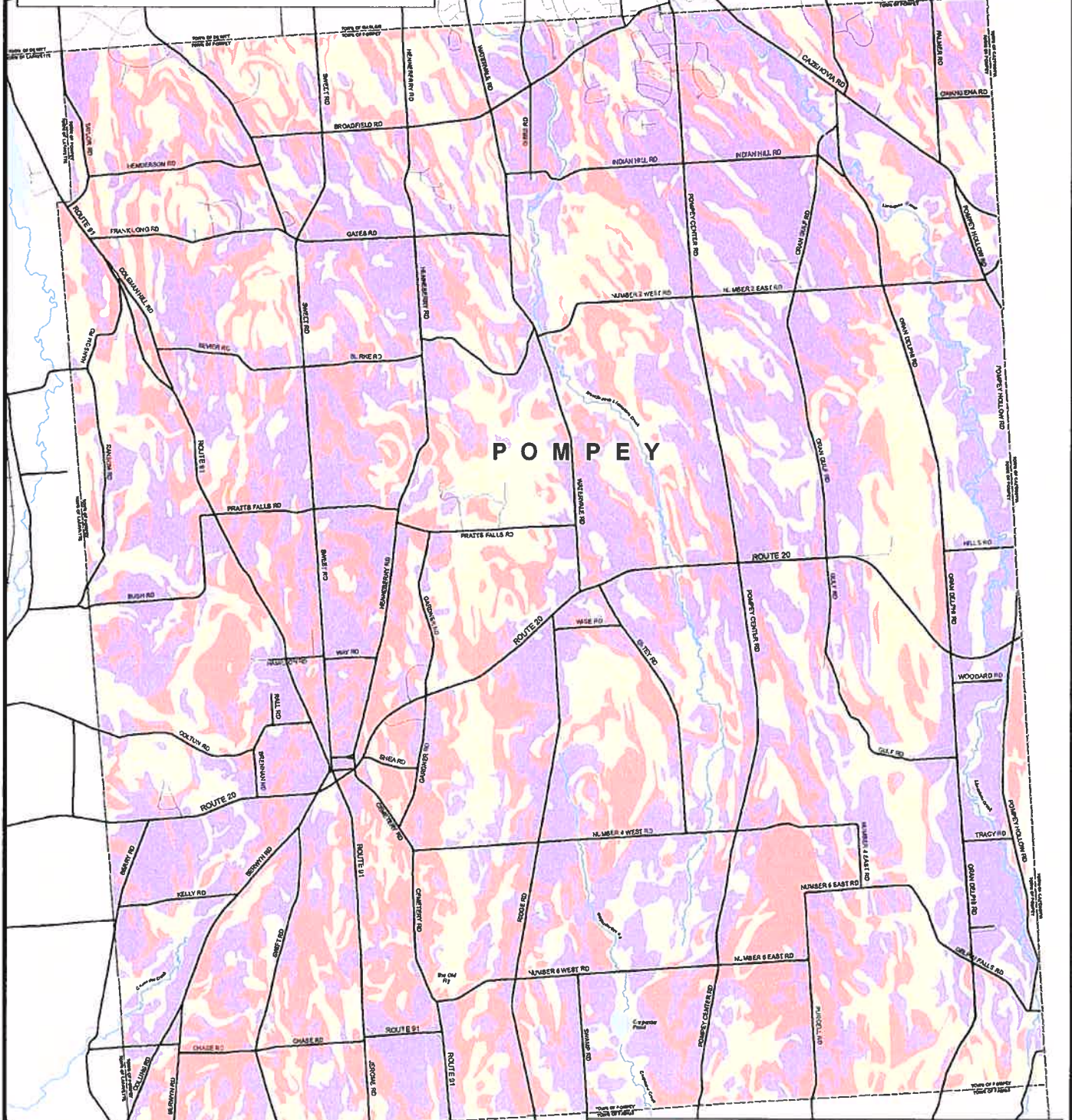
- |                             |                    |
|-----------------------------|--------------------|
| Developed, Low Intensity    | Bare Land          |
| Developed, Medium Intensity | Scrub/Shrub        |
| Developed, High Intensity   | Deciduous Forest   |
| Developed, Open Space       | Evergreen Forest   |
| Cultivated Crops            | Mixed Forest       |
| Pasture/Hay                 | Open Water         |
| Grass and Herbaceous        | Palustrine Wetland |



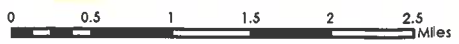


# TOWN OF POMPEY

Figure 7: Prime and Statewide Important Soils



- All areas are prime farmland
- Farmland of statewide importance
- Not prime or statewide important soils

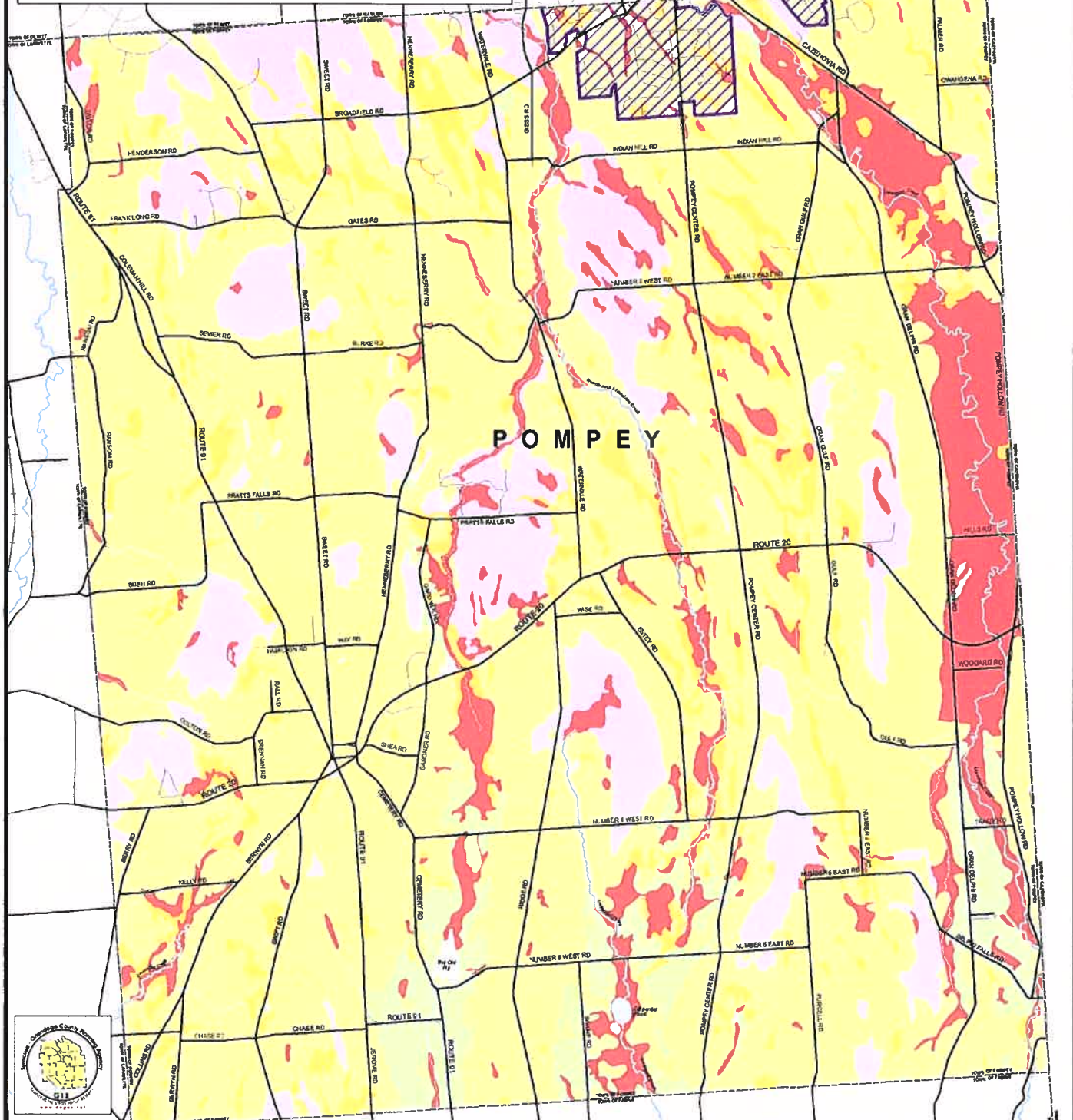


Prime farmland ratings for soils were obtained from attributes included in the Soil Survey Geographic (SSURGO) database for Onondaga County by 2006, and was produced by the U.S. Department of Agriculture.

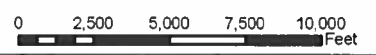


# TOWN OF POMPEY

## Figure 8: Septic System Suitability of Soils



**PLEASE NOTE:**  
 This map is intended for general planning purposes only, and should not be used to determine the suitability of a septic system for a specific site. Contact the Onondaga County Department of Environmental Health for site specific information. Soil data obtained from the U.S. Department of Agriculture's SSURGO database.

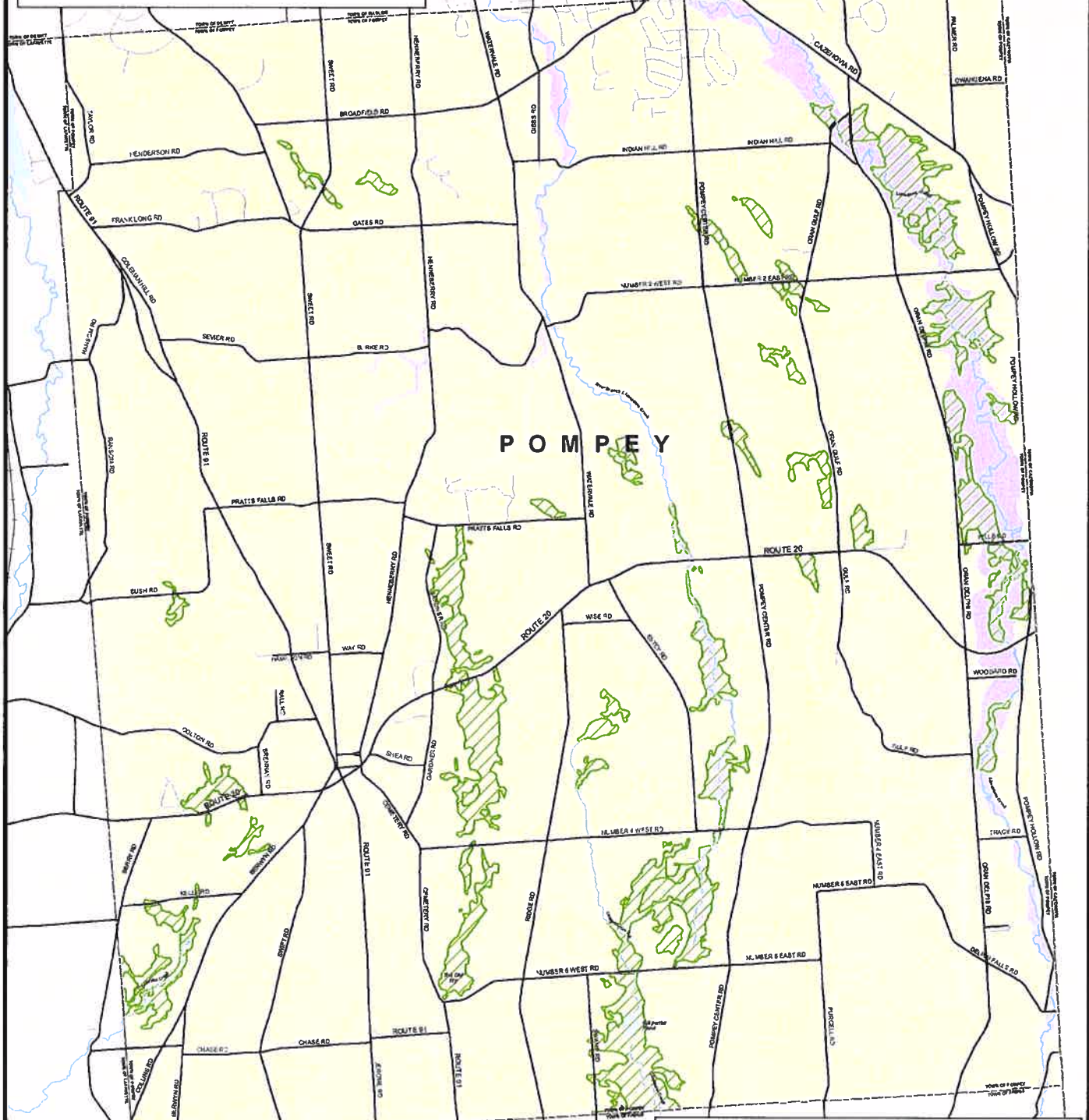



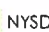
- Septic System Suitability Ratings\***
- SITES SUITABLE FOR CONVENTIONAL SYSTEMS WITH FEW LIMITATIONS AS TO LOCATION AND DESIGN.
  - SITES SUITABLE FOR CONVENTIONAL SYSTEMS ONLY IN THOSE AREAS WHERE PERCOLATION IS FOUND TO BE SATISFACTORY. DRAINAGE IMPROVEMENTS MAY BE REQUIRED. SHALLOW SYSTEM INSTALLATION MAY BE REQUIRED.
  - SITES GENERALLY NOT SUITABLE FOR CONVENTIONAL SYSTEMS.
  - SITES UNSUITABLE
  - SITES WITH UNDERLYING BEDROCK. SUITABILITY DEPENDENT UPON DEPTH TO BEDROCK IN SYSTEM AREA AND PERCOLATION OF SOIL ABOVE.
  - AREAS NOT RATED
  - ONONDAGA COUNTY SANITARY DISTRICT BOUNDARY

\*Septic system suitability ratings for soils obtained from the Onondaga County Department of Environmental Health.

# TOWN OF POMPEY

## Figure 9: FEMA Floodplains and NYSDEC Wetlands



 NYSDEC Wetlands  
 FEMA 100 Year Floodplains

0    0.5    1    1.5  
 Miles

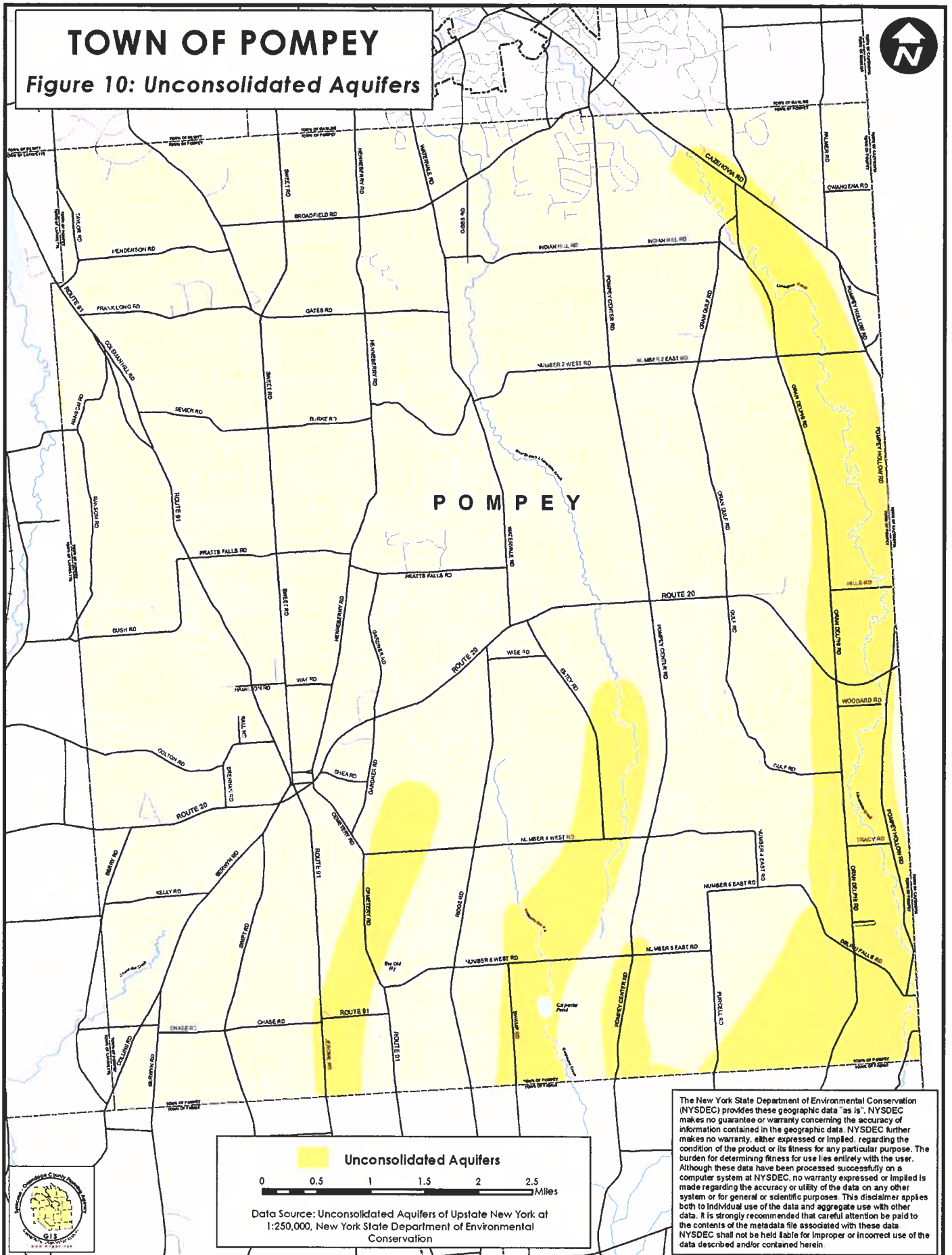
State Regulated Wetlands source: NYS Department of Environmental Conservation Disclaimer (provided with source wetland data).  
 This map depicts the approximate outline of freshwater wetlands regulated under Article 24 of the NYS Environmental Conservation Law, as maintained by the NYS Department of Environmental Conservation, Division of Fish, Wildlife and Marine Resources in certain counties of the State. Freshwater wetland boundaries are subject to amendment. The boundaries depicted are current as of October 1997. The regulated freshwater wetlands for all field counties are shown on official maps available at Regional offices of the NYS Department of Environmental Conservation and at the office of the clerk of each local government.

Floodplains data source:  
 Provided by the Federal Emergency Management Agency from Flood Insurance Maps June 1982 - August 1984

Source Disclaimer:  
 Not to be used to determine whether flood insurance is available in designated areas. For confirmation contact the National Flood Insurance Program, or refer to individual flood insurance maps available from the Town Clerk's offices.  
 This map was prepared to facilitate flood plain management activities only and may not show all special flood hazard areas in the community. Refer to the latest official Flood Insurance Rate Map for any additional of special flood hazard. Floodway widths in some areas may be too narrow to show to scale so they may have been exaggerated. This map does not necessarily show all areas subject to flooding.

# TOWN OF POMPEY

Figure 10: Unconsolidated Aquifers



 Unconsolidated Aquifers



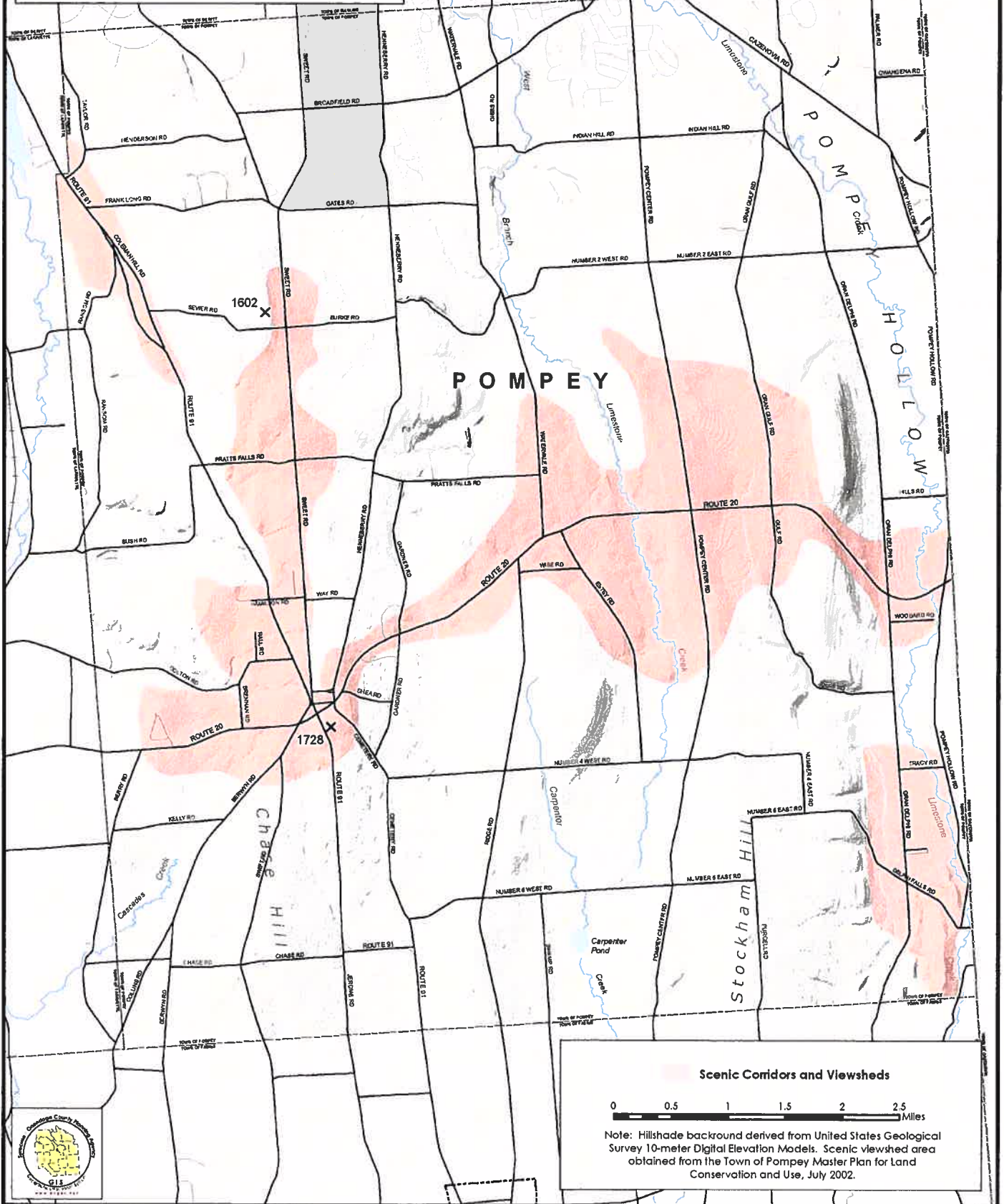
Data Source: Unconsolidated Aquifers of Upstate New York at 1:250,000, New York State Department of Environmental Conservation

The New York State Department of Environmental Conservation (NYSDEC) provides these geographic data "as is". NYSDEC makes no guarantee or warranty concerning the accuracy of information contained in the geographic data. NYSDEC further makes no warranty, either expressed or implied, regarding the condition of the product or its fitness for any particular purpose. The burden for determining fitness for use lies entirely with the user. Although these data have been processed successfully on a computer system at NYSDEC, no warranty expressed or implied is made regarding the accuracy or utility of the data on any other system or for general or scientific purposes. This disclaimer applies both to individual use of the data and aggregate use with other data. It is strongly recommended that careful attention be paid to the contents of the metadata file associated with these data. NYSDEC shall not be held liable for improper or incorrect use of the data described and/or contained herein.



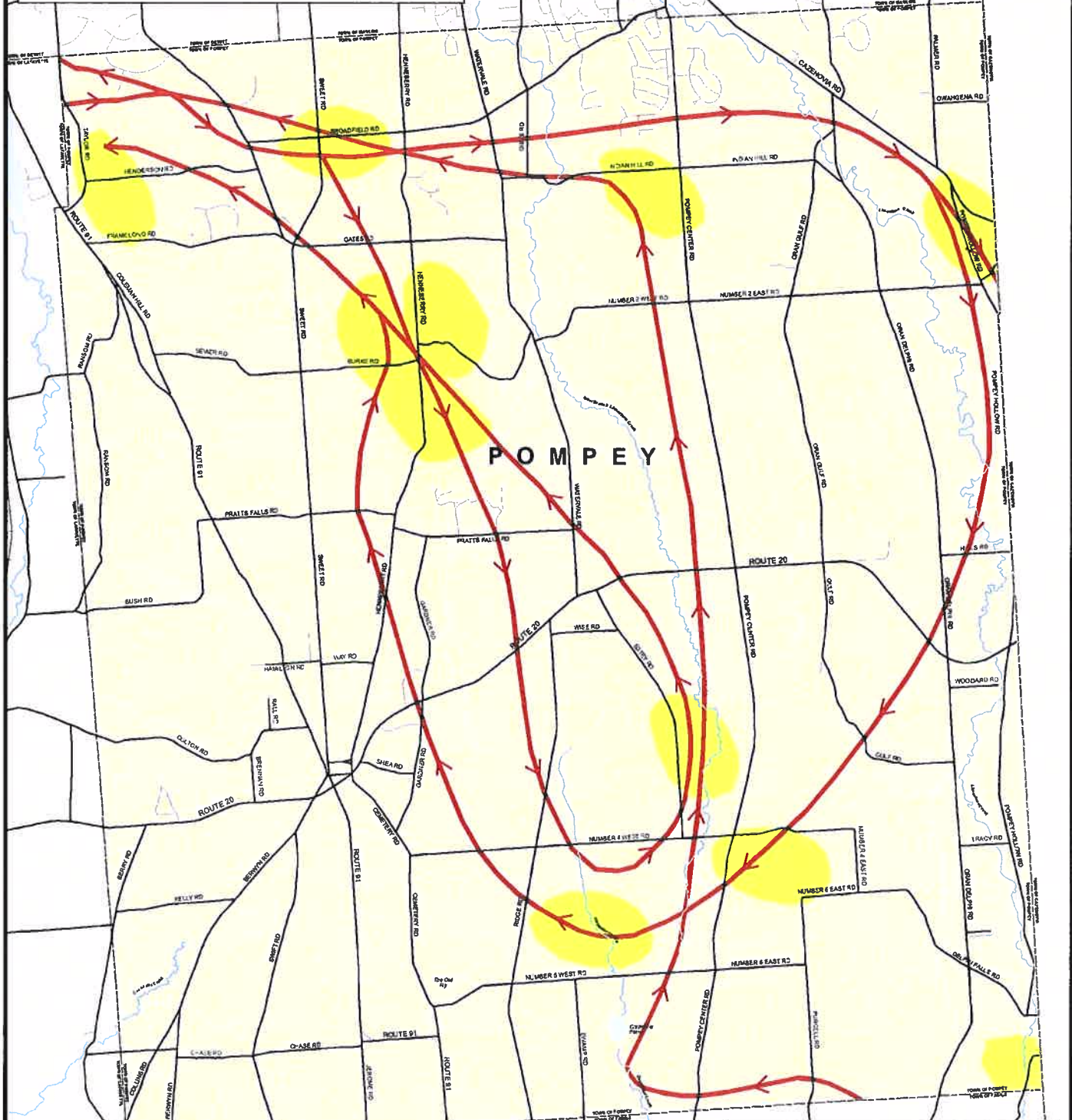
# TOWN OF POMPEY

Figure 11: Scenic Corridors and Viewsheds



# TOWN OF POMPEY

## Figure 12: Onondaga Nation Archeological Sites



### LEGEND

- Archeological Sites
- Archeological Trails

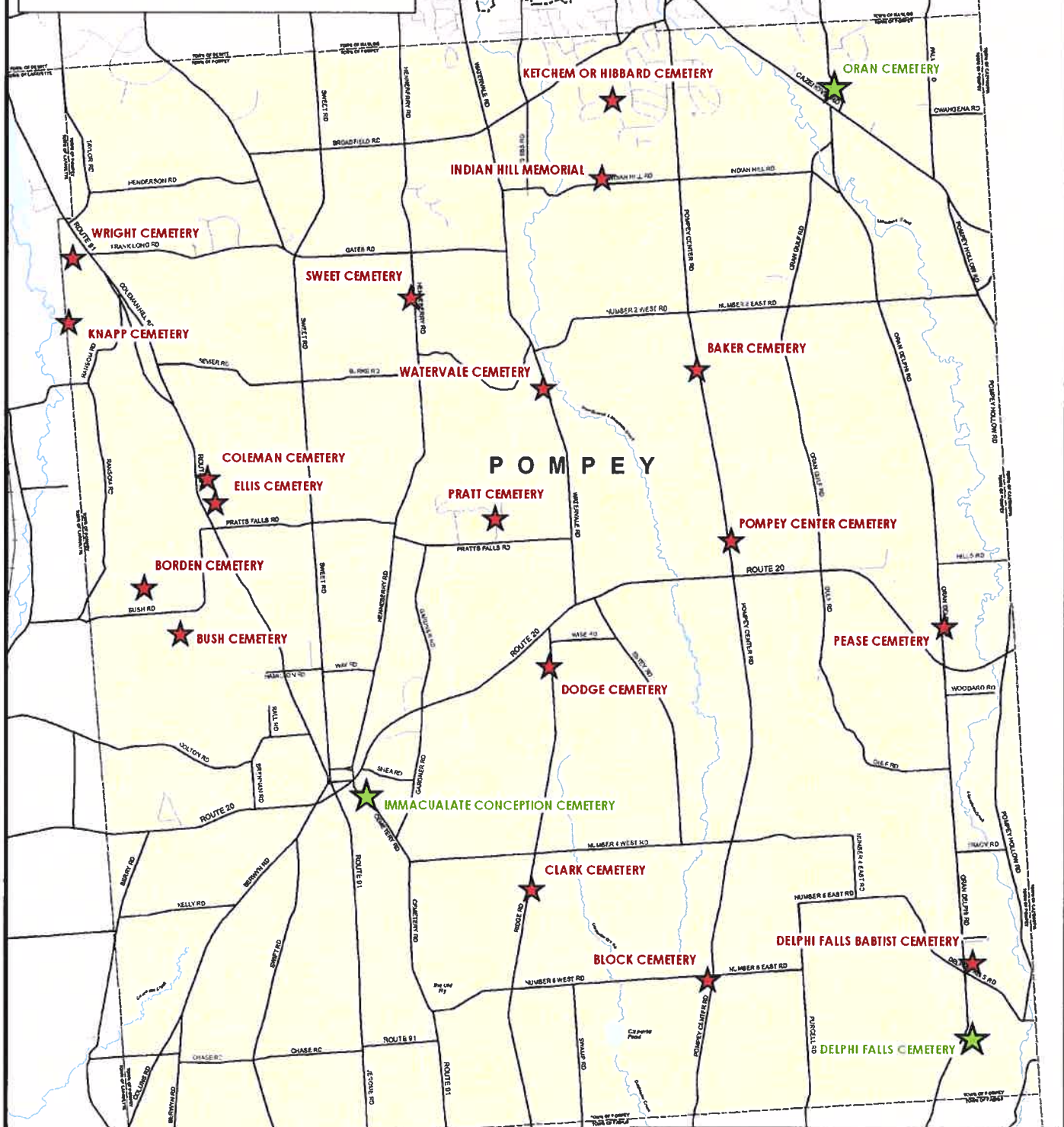




This map is a recreation of a map obtained from "Pompey: Our Town in Profile" (Shoebidge, 1976). The accuracy of the source map is unknown. This map is intended for general planning purposes only, and is not intended to replace site-specific archaeological surveys.

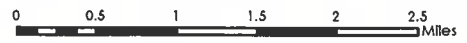


# TOWN OF POMPEY

## Figure 13: Cemeteries



-  ACTIVE CEMETERY
-  INACTIVE OR HISTORIC CEMETERY

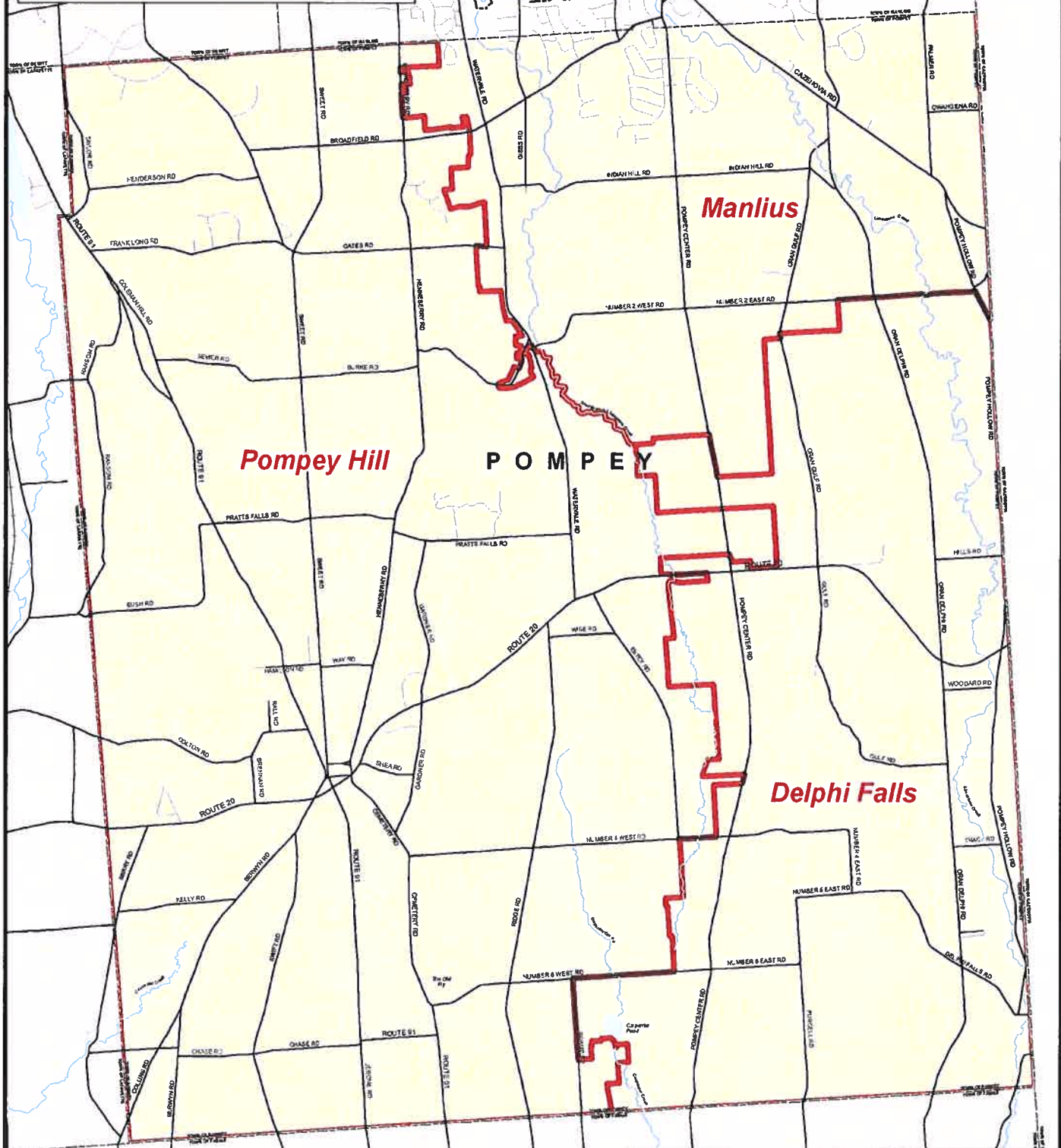



Cemetery name and location information obtained from various sources, including the Onondaga County Real Property File, the Internet, and "Pompey: Our Town in Profile" (Shoebridge, 1976).



# TOWN OF POMPEY

## Figure 14: Fire Districts



 Fire District Boundaries

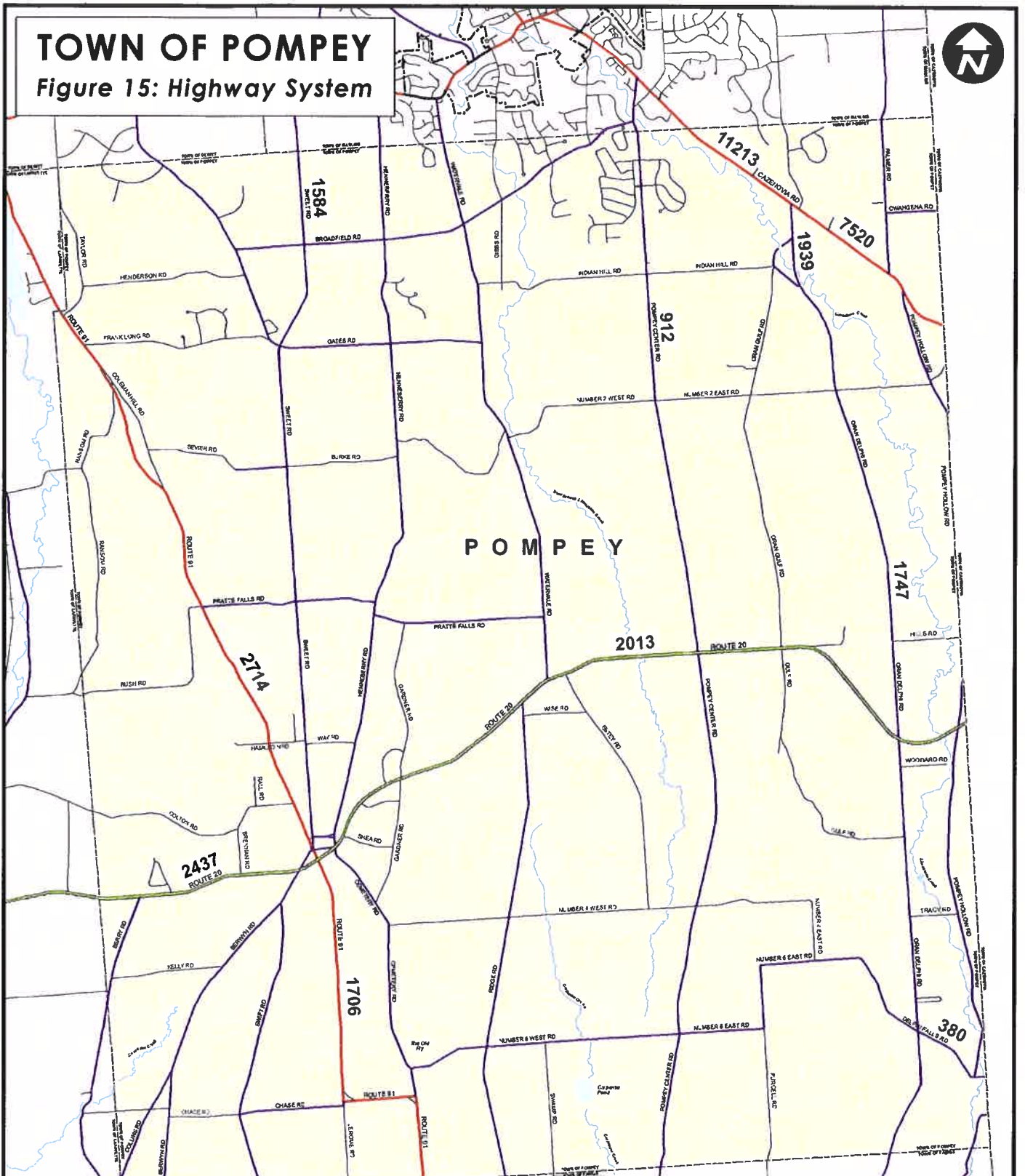
0 0.5 1 1.5 2 2.5 Miles

Fire district boundaries derived from the Onondaga County 911 Department. This map is intended for general planning purposes only.



# TOWN OF POMPEY

## Figure 15: Highway System



**2437**  
ROUTE 20

**Highway Classification**

	FEDERAL HIGHWAYS (8.5 mi.)		COUNTY HIGHWAYS (76.2 mi.)
	STATE HIGHWAYS (11.5 mi.)		TOWN ROADS (66.0 mi.)

**2437** AVERAGE DAILY NYSDOT TRAFFIC COUNT

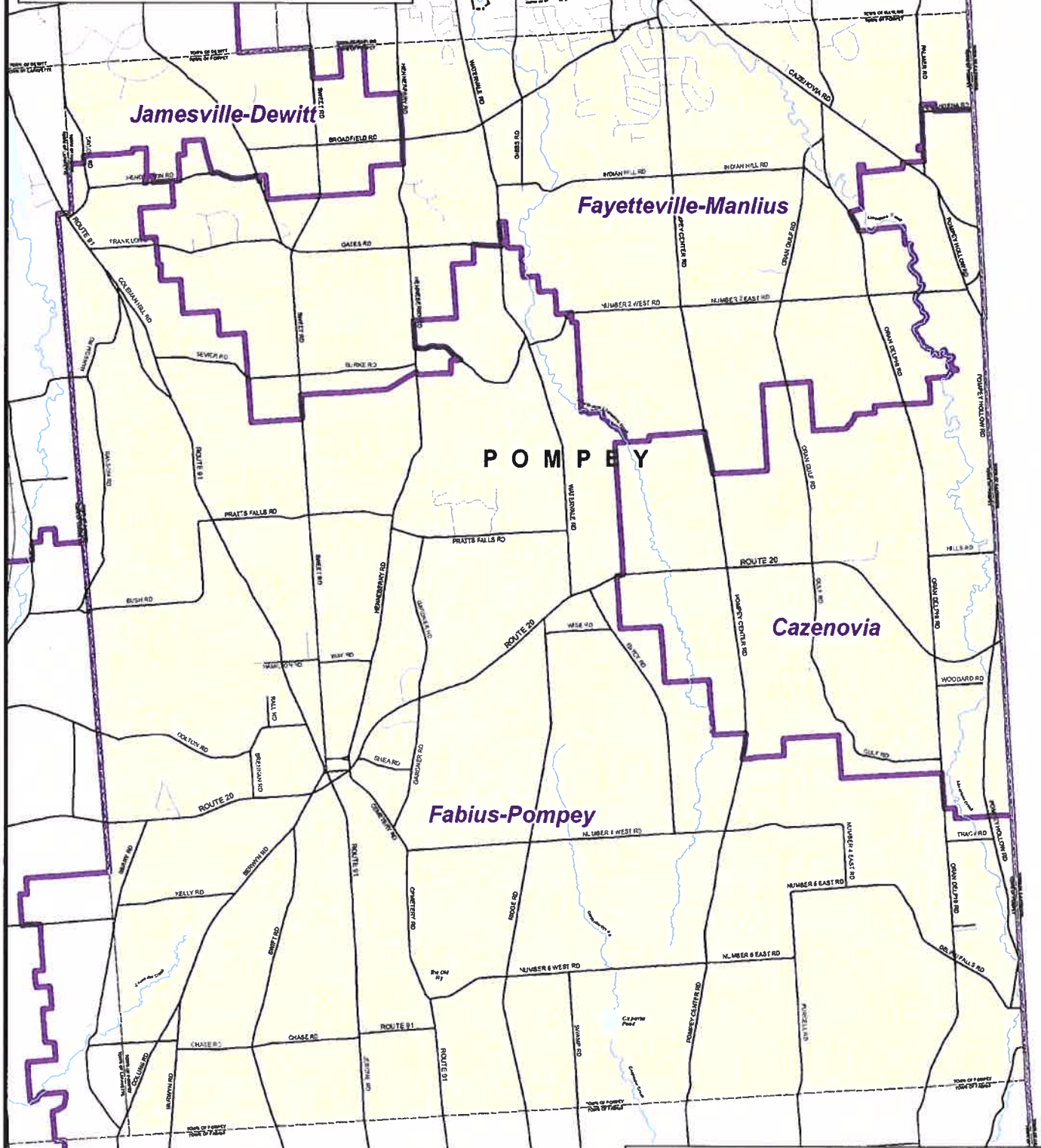
0 0.5 1 1.5 2 2.5 Miles


Note: Highway ownership information derived by the Syracuse-Onondaga County Planning Agency. Traffic count information obtained from the New York State Department of Transportation ([www.dot.ny.gov/tdv](http://www.dot.ny.gov/tdv)).



# TOWN OF POMPEY

## Figure 16: School Districts



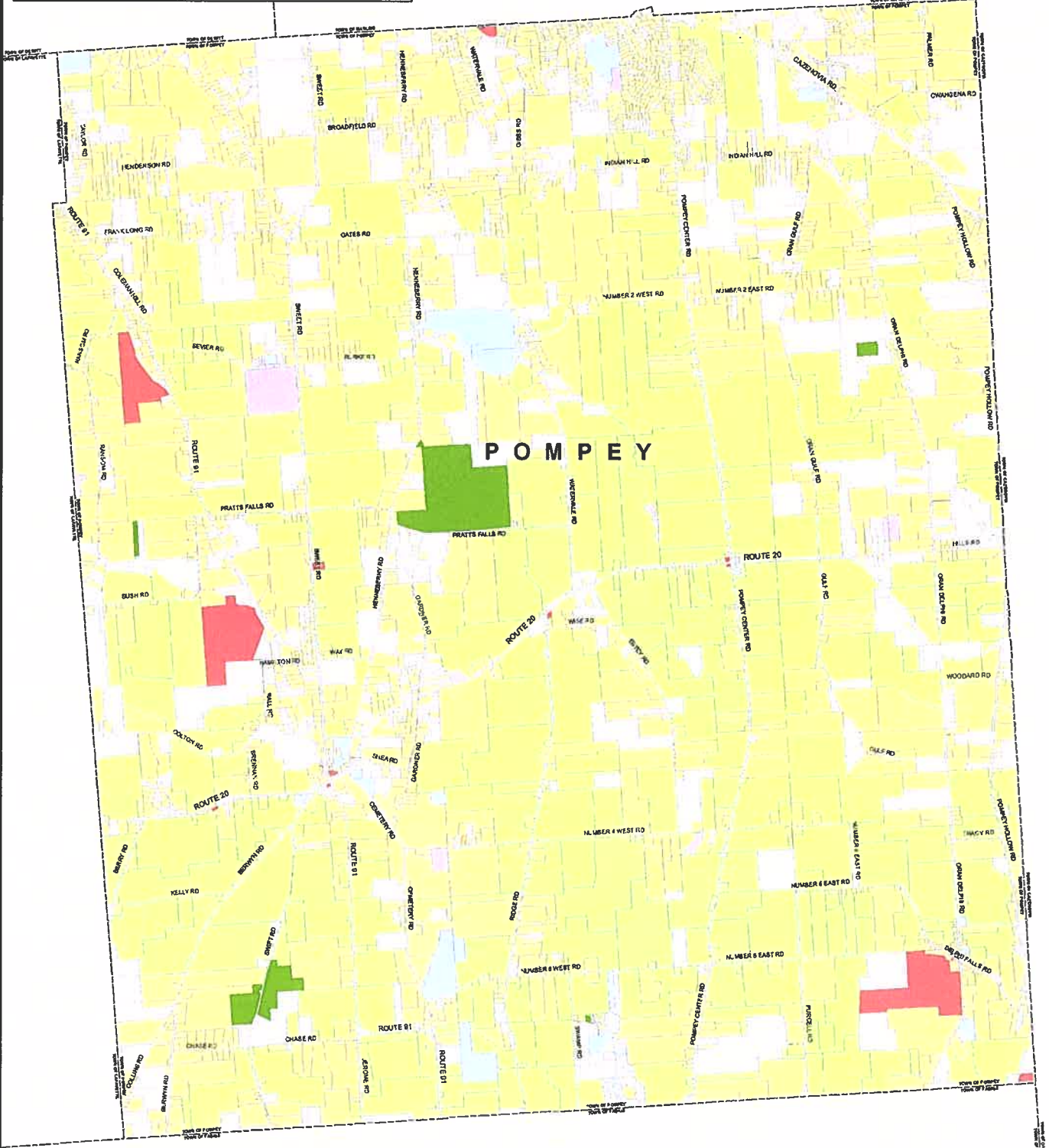
 School District Boundaries

0    0.5    1    1.5    2    2.5 Miles

School district boundaries derived from the 2011 Onondaga County Real Property Database. This map is intended for general planning purposes only.

# TOWN OF POMPEY

## Figure 17: Land Use



Note: Land uses obtained from the Onondaga County Real Property File, 7/11. Interpretation of land use may vary depending on the application. SOCPA makes no guarantee that the land use shown on this map will necessarily agree with how the land use would be classified based on your particular application. This map is useful for identifying general land use patterns but should be field checked for site-specific land use.

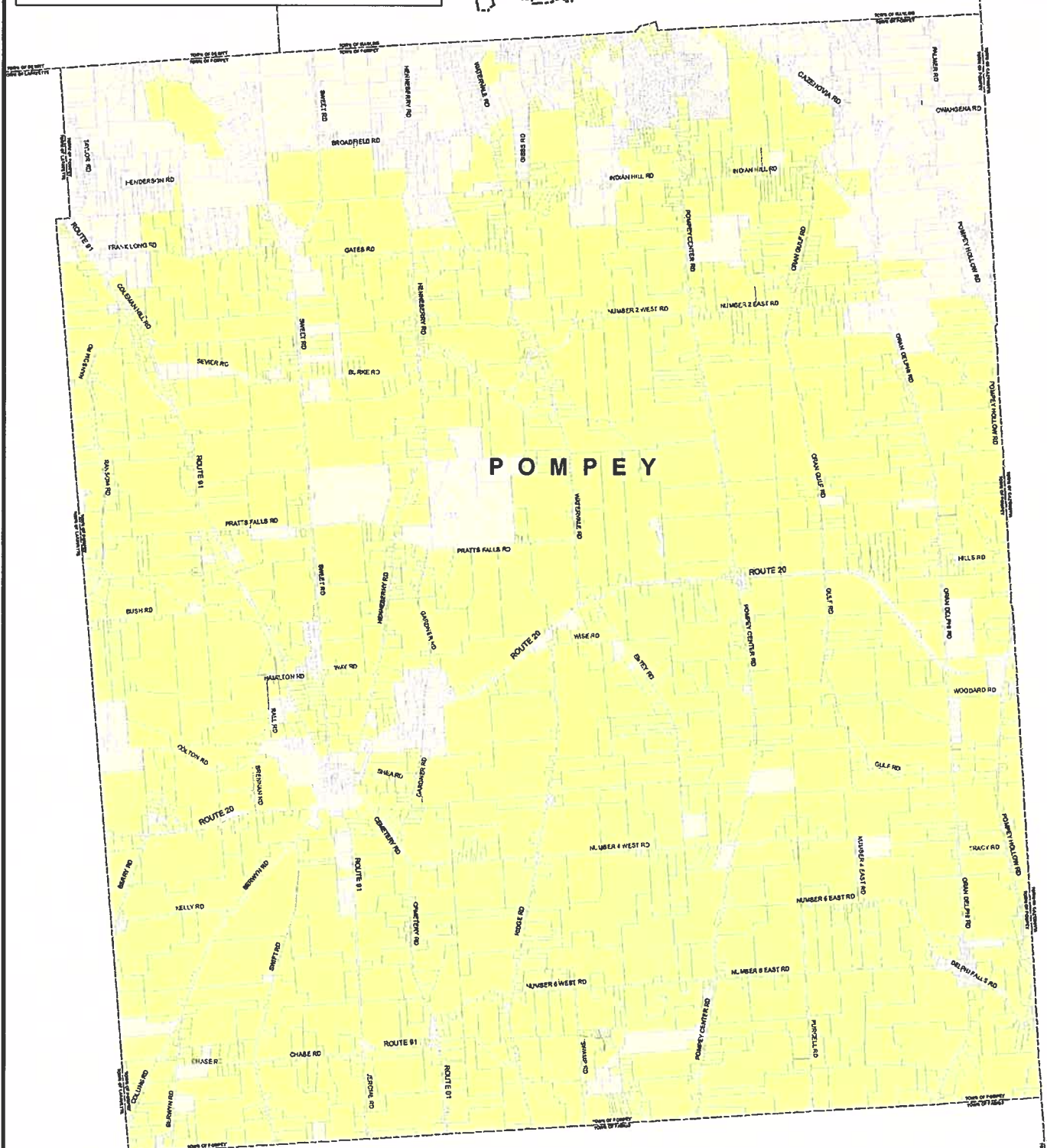
**LEGEND**

NO DATA AVAILABLE	COMMERCIAL	PUBLIC SERVICE
AGRICULTURAL	INDUSTRIAL/UTILITY	RESIDENTIAL
PARKS/OPEN SPACE	MINING	VACANT

0 0.5 1 1.5 2 2.5 Miles

# TOWN OF POMPEY

## Figure 18: Agricultural Districts



Agricultural District Parcels

0      0.5      1      1.5      2      2.5 Miles

Note: All of Pompey is in Onondaga County Agricultural District #4. This map is intended for general planning purposes only.

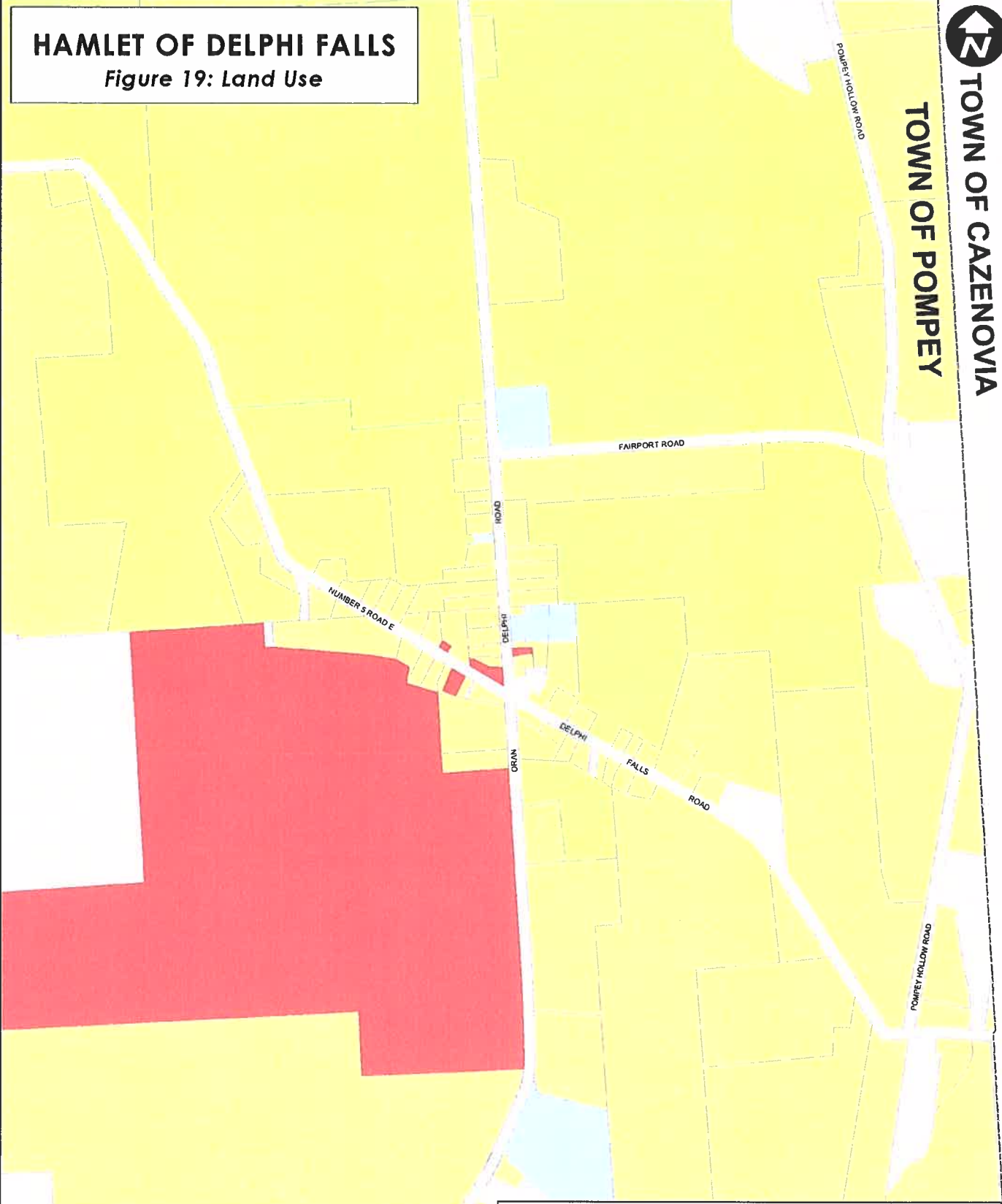
# HAMLET OF DELPHI FALLS

Figure 19: Land Use



TOWN OF POMPEY

TOWN OF CAZENOVIA



Note: Land uses obtained from the Onondaga County Real Property File, 7/11. Interpretation of land use may vary depending on the application. SOCPA makes no guarantee that the land use shown on this map will necessarily agree with how the land use would be classified based on your particular application. This map is useful for identifying general land use patterns but should be field checked for site-specific land use.

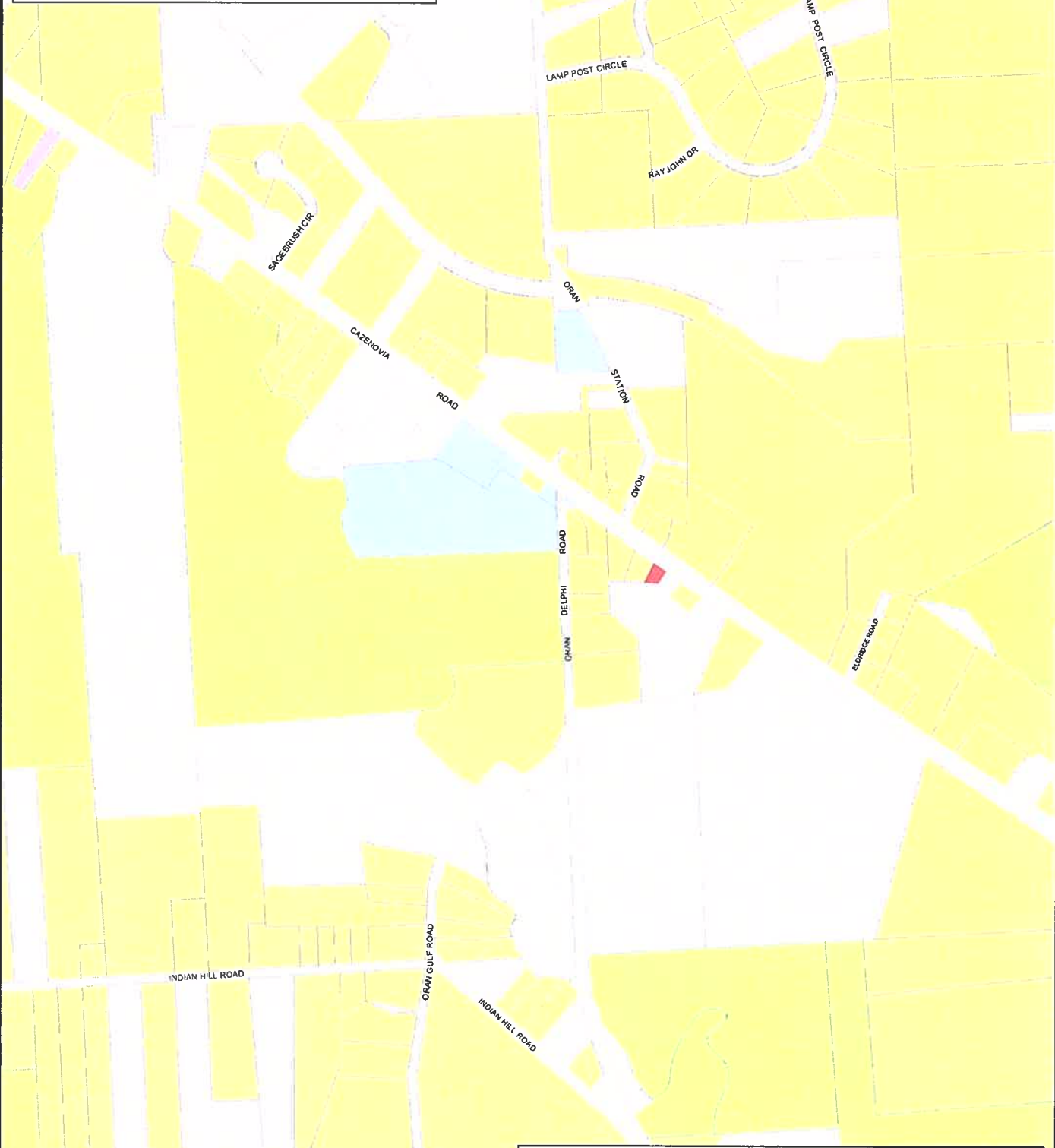
### LEGEND

NO DATA AVAILABLE	COMMERCIAL	PUBLIC SERVICE
AGRICULTURAL	INDUSTRIAL/UTILITY	RESIDENTIAL
PARKS/OPEN SPACE	MINING	VACANT

0 500 1 000 1 500 2 000 2 500 Feet

# HAMLET OF ORAN

Figure 20: Land Use



Note: Land uses obtained from the Onondaga County Real Property File, 7/11. Interpretation of land use may vary depending on the application. SOCPA makes no guarantee that the land use shown on this map will necessarily agree with how the land use would be classified based on your particular application. This map is useful for identifying general land use patterns but should be field checked for site-specific land use.

### LEGEND

- |                   |                    |                |
|-------------------|--------------------|----------------|
| NO DATA AVAILABLE | COMMERCIAL         | PUBLIC SERVICE |
| AGRICULTURAL      | INDUSTRIAL/UTILITY | RESIDENTIAL    |
| PARKS/OPEN SPACE  | MINING             | VACANT         |



# HAMLET OF POMPEY CENTER

Figure 21: Land Use



Note: Land uses obtained from the Onondaga County Real Property File, 7/11. Interpretation of land use may vary depending on the application. SOCPA makes no guarantee that the land use shown on this map will necessarily agree with how the land use would be classified based on your particular application. This map is useful for identifying general land use patterns but should be field checked for site-specific land use.

### LEGEND

- |                   |                    |                |
|-------------------|--------------------|----------------|
| NO DATA AVAILABLE | COMMERCIAL         | PUBLIC SERVICE |
| AGRICULTURAL      | INDUSTRIAL/UTILITY | RESIDENTIAL    |
| PARKS/OPEN SPACE  | MINING             | VACANT         |

0 500 1,000 1,500 2,000 2,500 Feet

# HAMLET OF POMPEY HILL

Figure 22: Land Use



Note: Land uses obtained from the Onondaga County Real Property File, 7/11. Interpretation of land use may vary depending on the application. SOCPA makes no guarantee that the land use shown on this map will necessarily agree with how the land use would be classified based on your particular application. This map is useful for identifying general land use patterns but should be field checked for site-specific land use.

## LEGEND

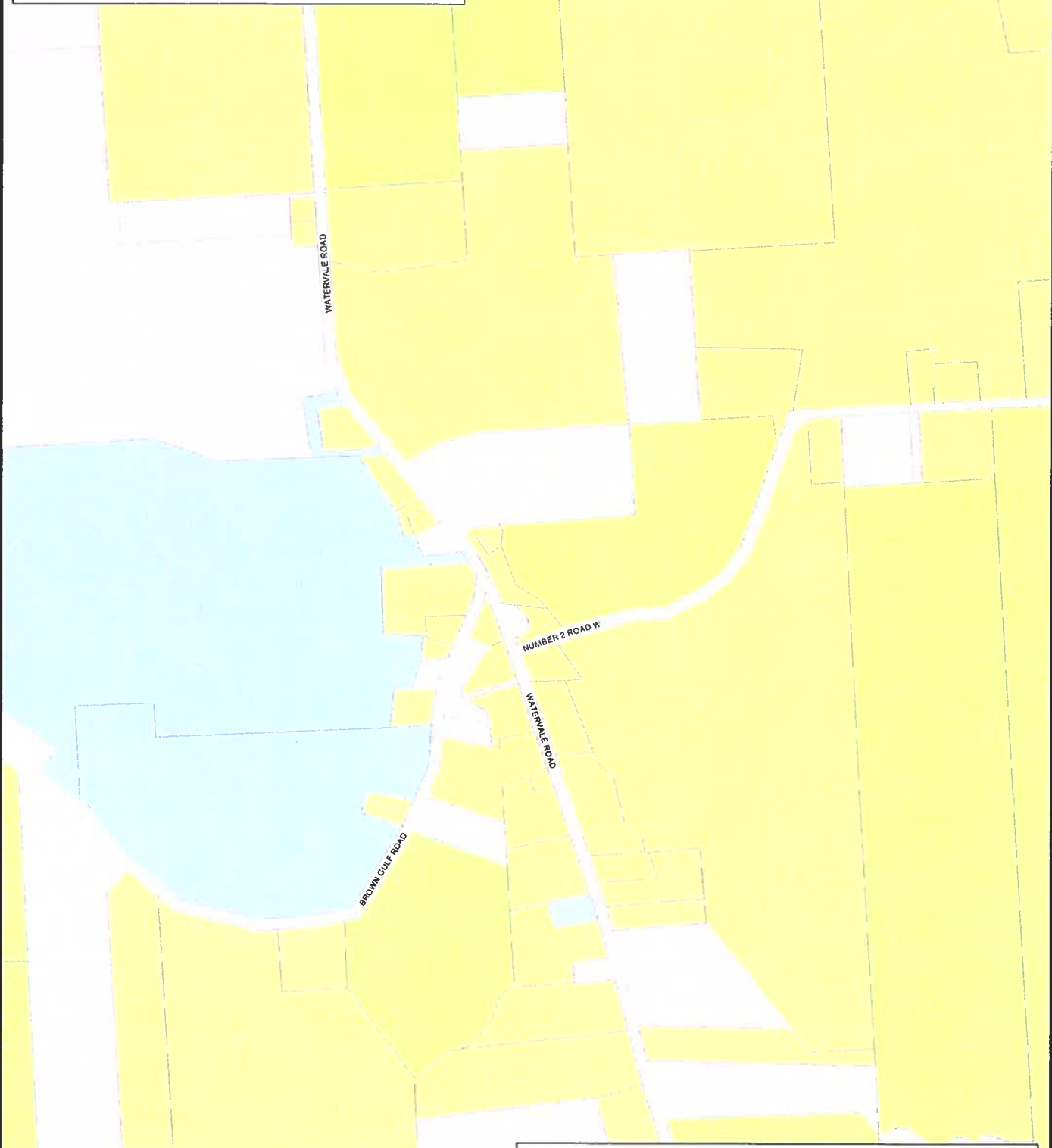
- |                   |                    |                |
|-------------------|--------------------|----------------|
| NO DATA AVAILABLE | COMMERCIAL         | PUBLIC SERVICE |
| AGRICULTURAL      | INDUSTRIAL/UTILITY | RESIDENTIAL    |
| PARKS/OPEN SPACE  | MINING             | VACANT         |

0 500 1000 1500 2000 2500 Feet



# HAMLET OF WATERVALE

Figure 23: Land Use



Note: Land uses obtained from the Onondaga County Real Property File, 7/11. Interpretation of land use may vary depending on the application. SOCPA makes no guarantee that the land use shown on this map will necessarily agree with how the land use would be classified based on your particular application. This map is useful for identifying general land use patterns but should be field checked for site-specific land use.

**LEGEND**

NO DATA AVAILABLE	COMMERCIAL	PUBLIC SERVICE
AGRICULTURAL	INDUSTRIAL/UTILITY	RESIDENTIAL
PARKS/OPEN SPACE	MINING	VACANT

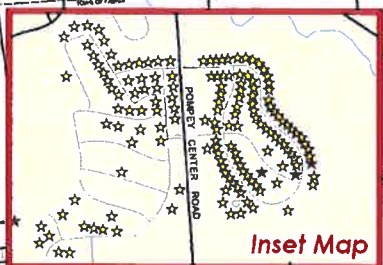
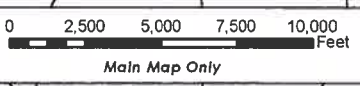
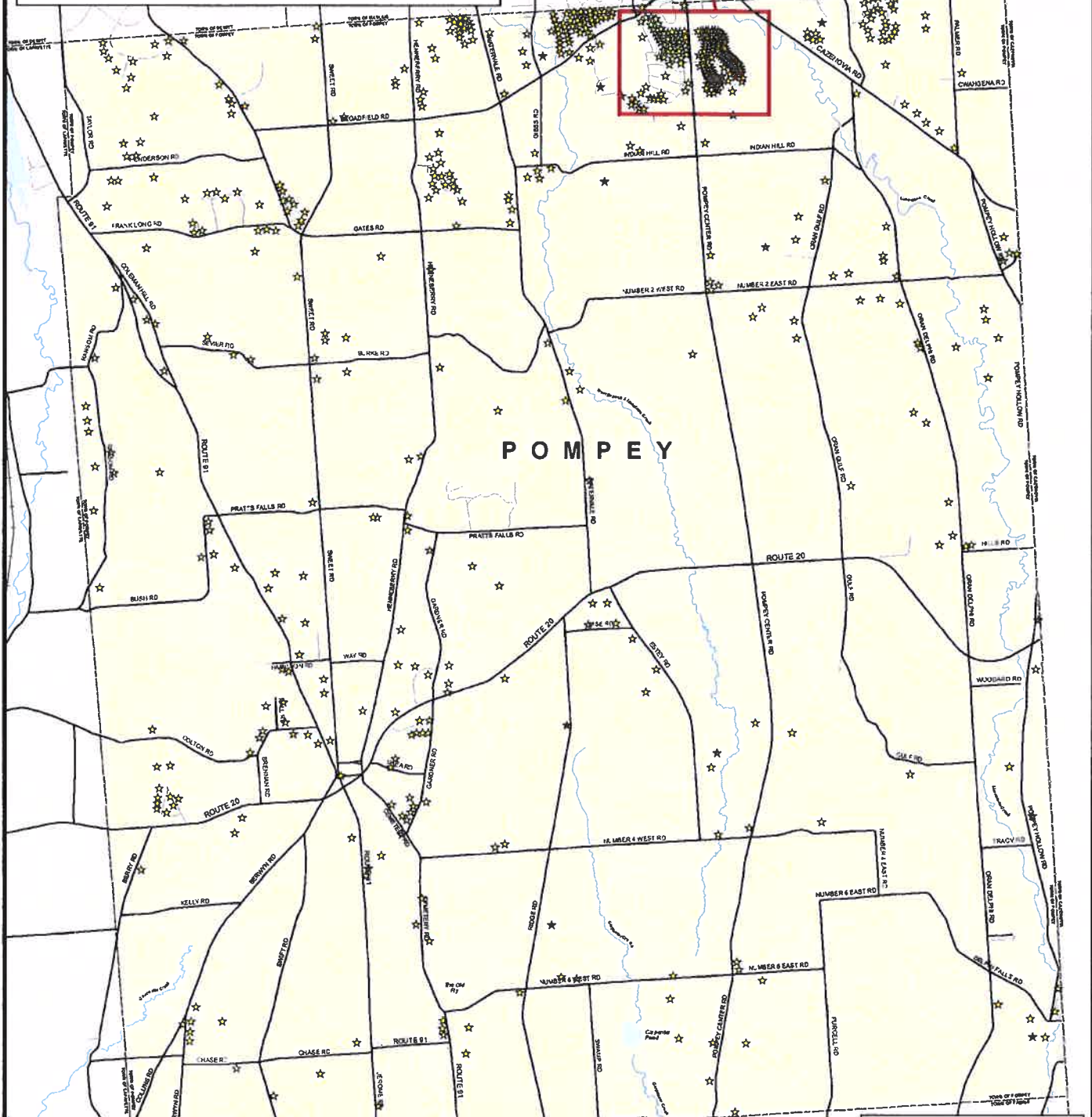
0 500 1,000 1,500 2,000 2,500 Feet

# TOWN OF POMPEY

Figure 24: Housing Built Since 1990



See Inset Map

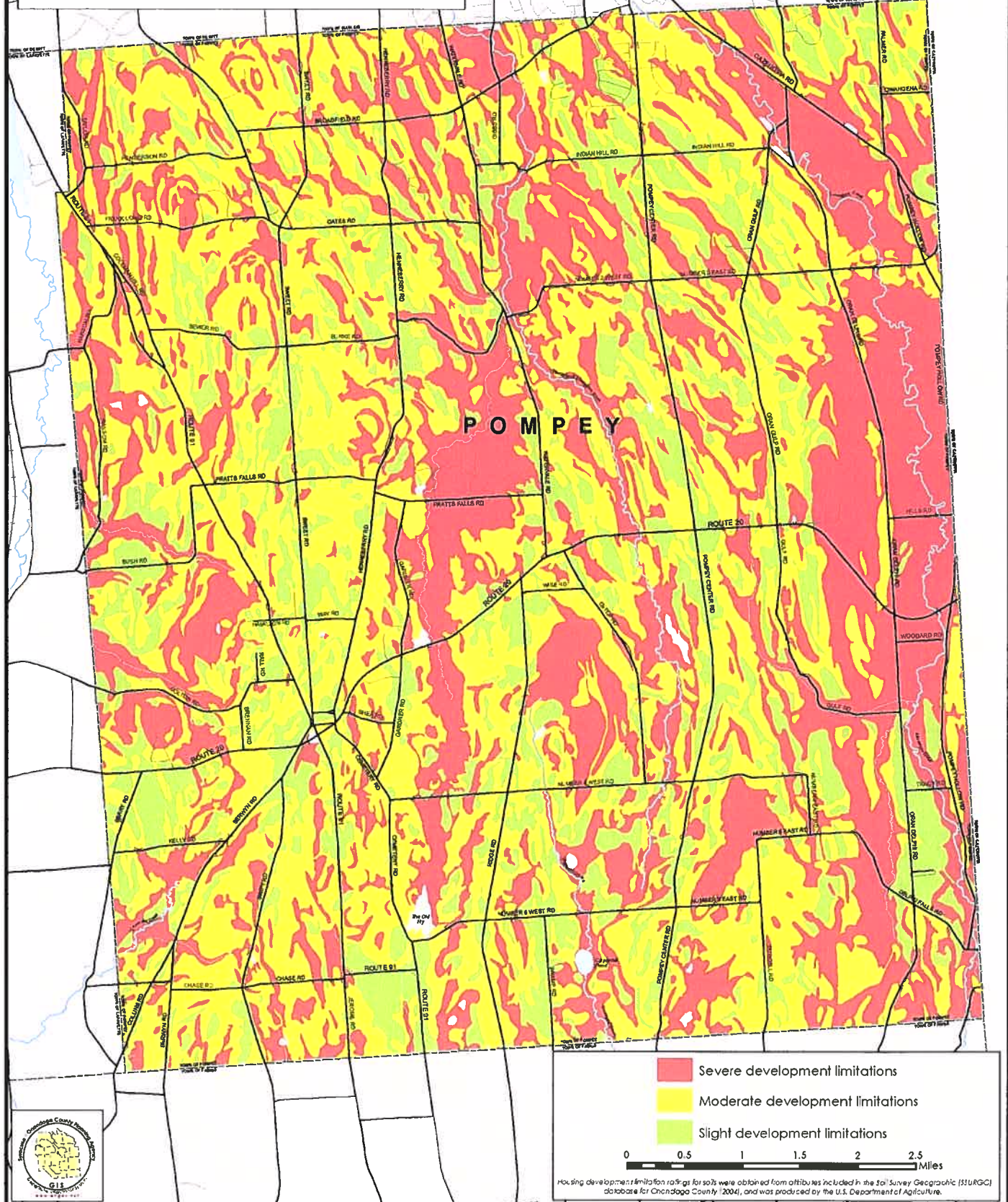


Year Built	
☆	1990-1995 (193)
☆	1995-2000 (165)
☆	2000-2005 (212)
☆	2005-2011 (13)

Housing year built information obtained from the Onondaga County Real Property File, 7/11.  
House locations based on parcel centroids.  
Approximately 10% of houses in Pompey have a missing year built date, and are not shown.

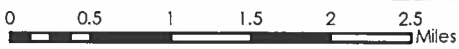
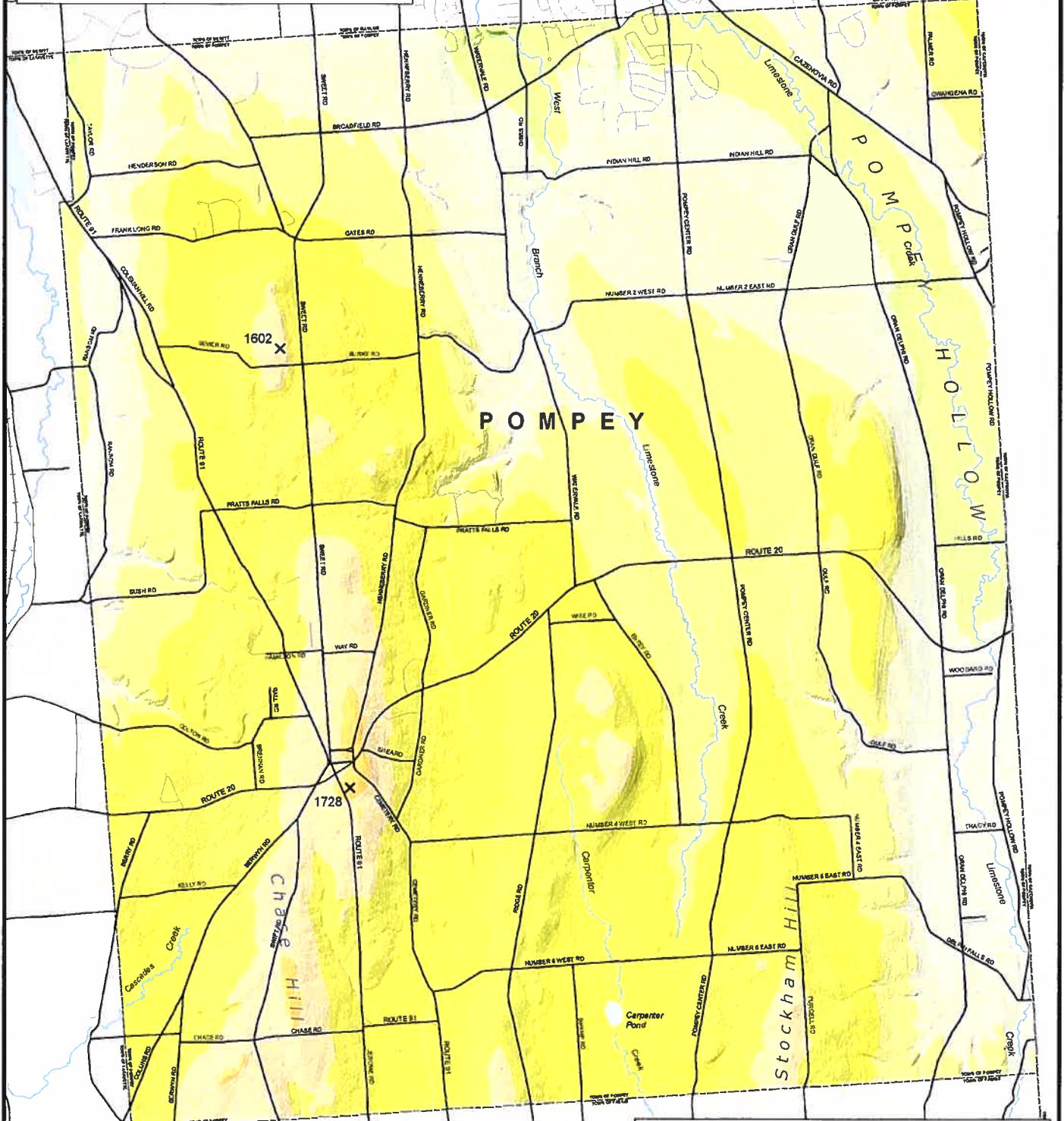
# TOWN OF POMPEY

Figure 25: Housing Development Limitations of Soils



# TOWN OF POMPEY

## Figure 26: Topography



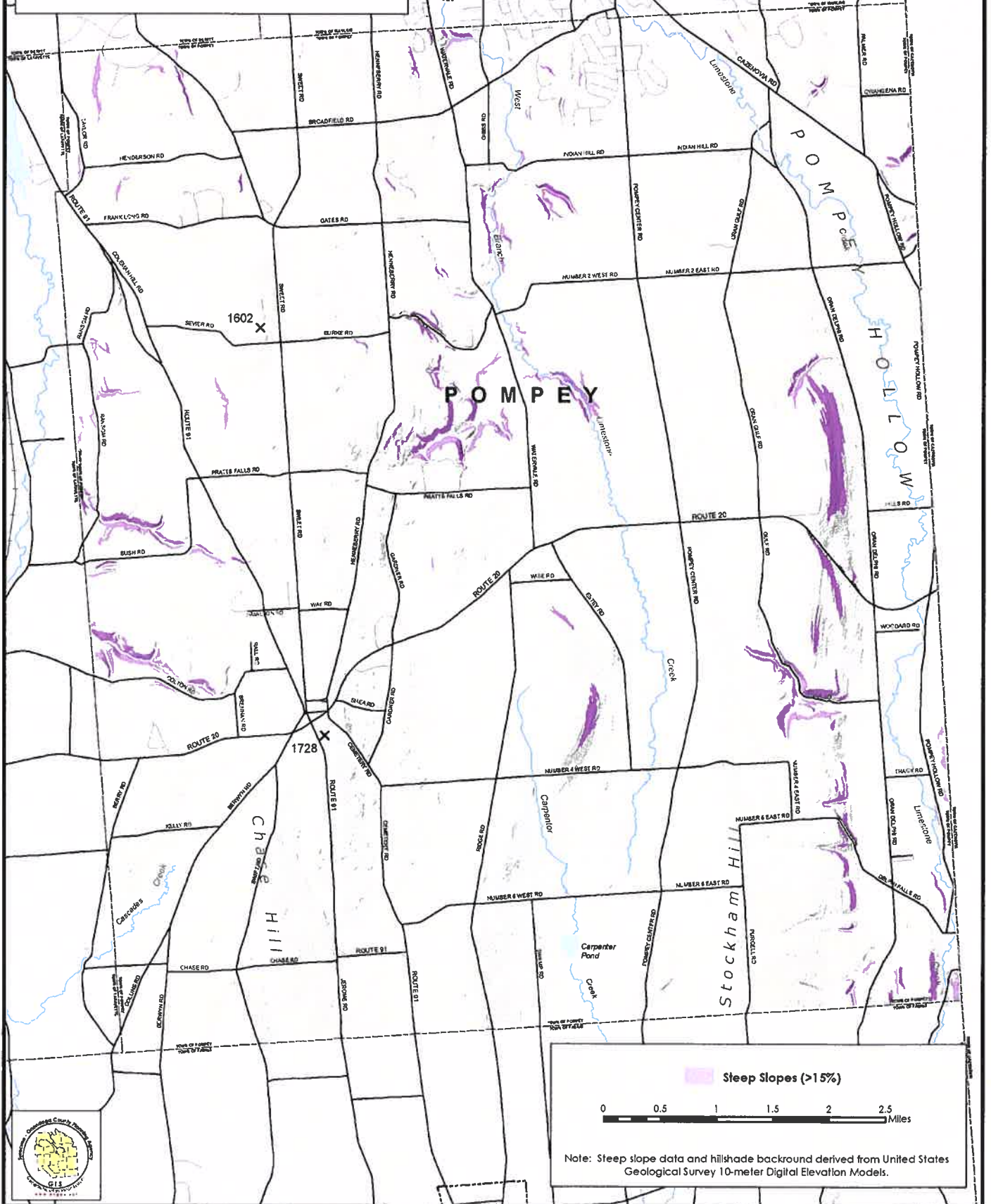
Note: Elevation data obtained from United States Geological Survey 10-meter Digital Elevation Models. Topographic feature names and elevations obtained from USGS Topographic 7.5 minute quadrangle maps. This map is intended for general planning purposes only.

Elevation in Feet	
1100 - 1250	1250 - 1400
500 - 650	1400 - 1550
650 - 800	1550 - 1700
800 - 950	1700 - 1850
950 - 1100	



# TOWN OF POMPEY

Figure 27: Steep Slopes (>15%)



Steep Slopes (>15%)

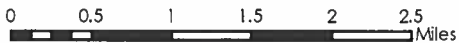
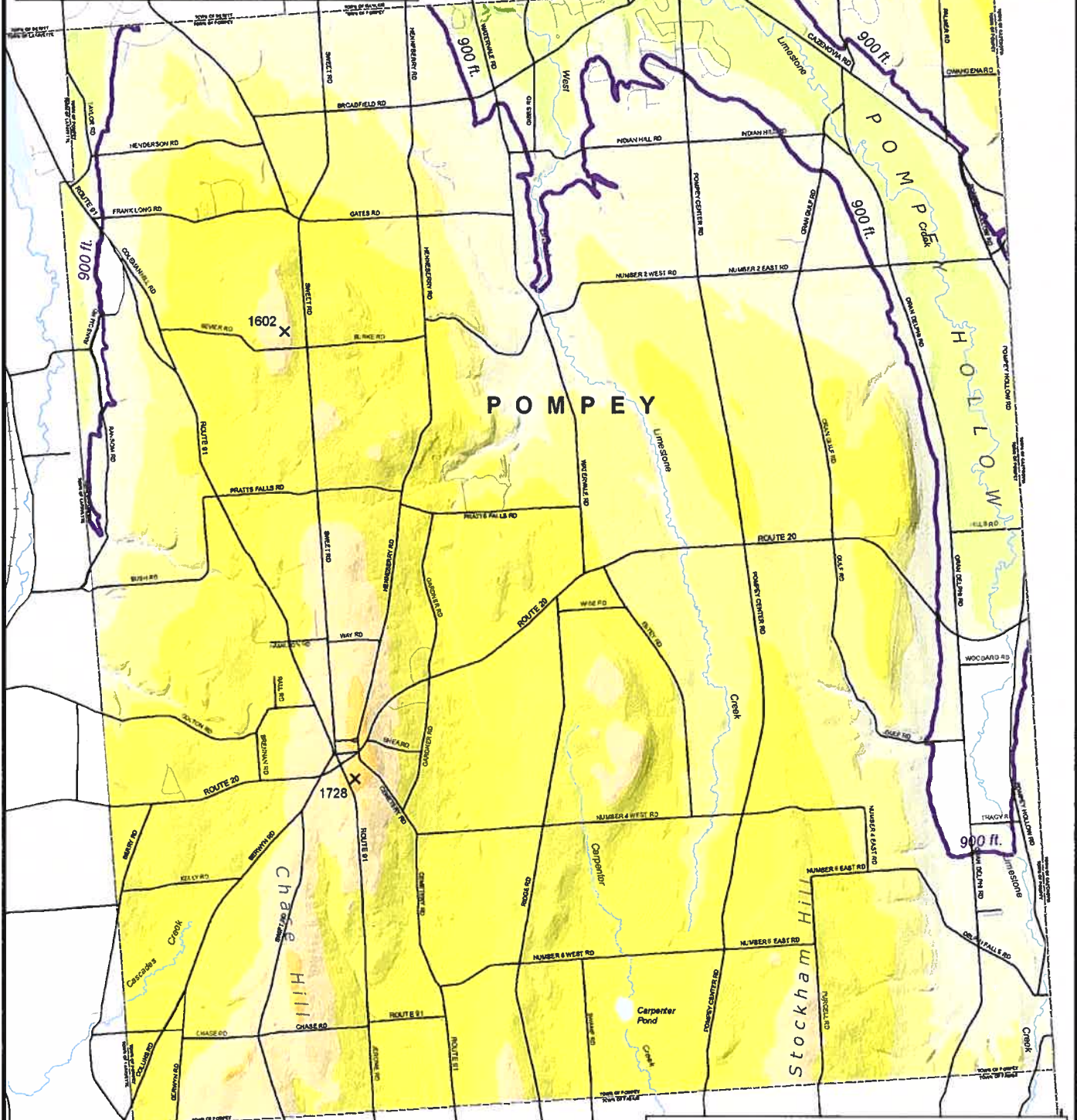
0 0.5 1 1.5 2 2.5 Miles

Note: Steep slope data and hillshade background derived from United States Geological Survey 10-meter Digital Elevation Models.



# TOWN OF POMPEY

Figure 28: Topographic Map with 900 Foot Contour



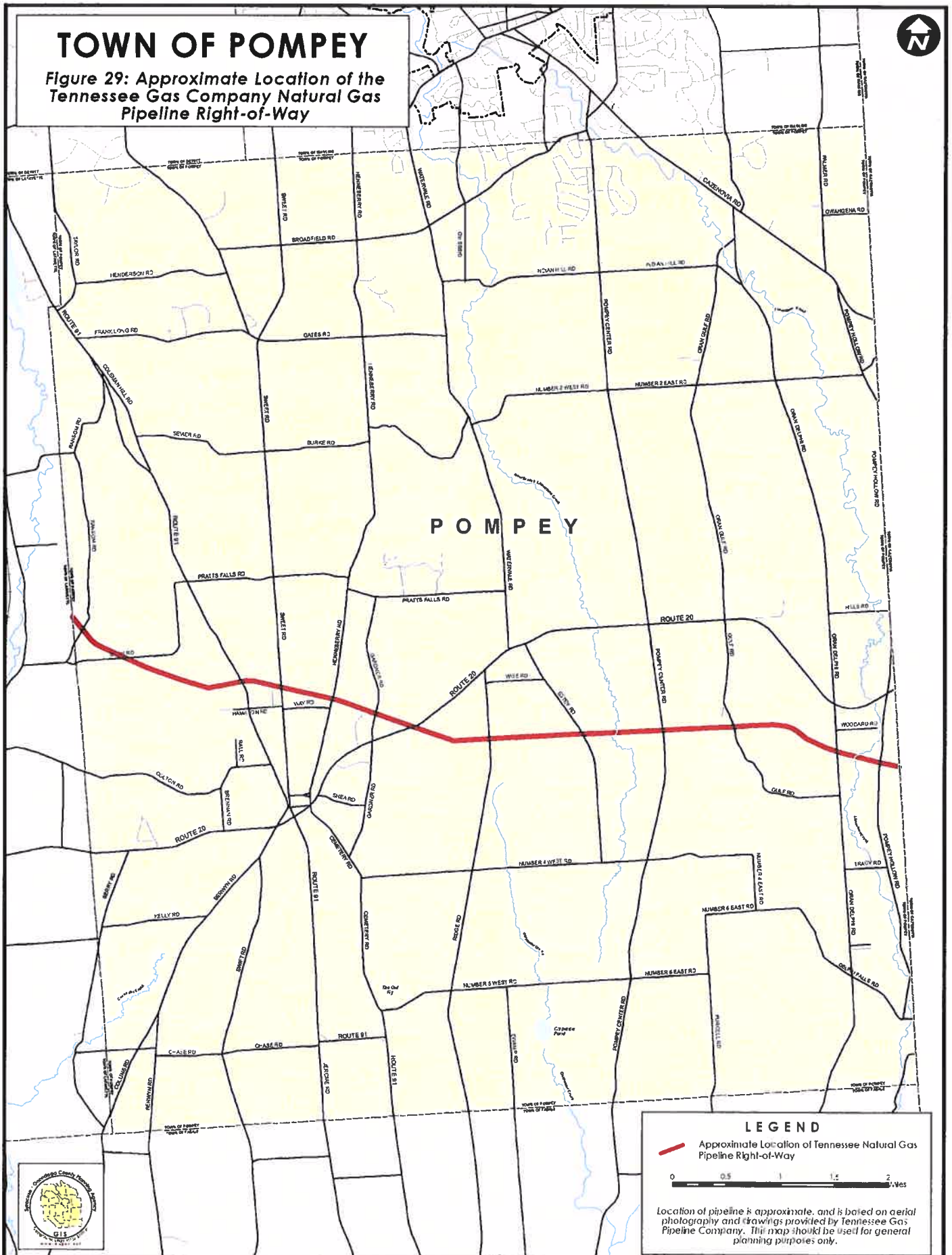
Note: Elevation data obtained from United States Geological Survey 10-meter Digital Elevation Models. Topographic feature names and elevations obtained from USGS Topographic 7.5 minute quadrangle maps. This map is intended for general planning purposes only.

Elevation in Feet	
1100 - 1250	1250 - 1400
500 - 650	1400 - 1550
650 - 800	1550 - 1700
800 - 950	1700 - 1850
950 - 1100	



# TOWN OF POMPEY

Figure 29: Approximate Location of the Tennessee Gas Company Natural Gas Pipeline Right-of-Way



## LEGEND

Approximate Location of Tennessee Natural Gas Pipeline Right-of-Way

0 0.5 1 1.5 2 Miles

Location of pipeline is approximate, and is based on aerial photography and drawings provided by Tennessee Gas Pipeline Company. This map should be used for general planning purposes only.